

LISTA RICAMBI

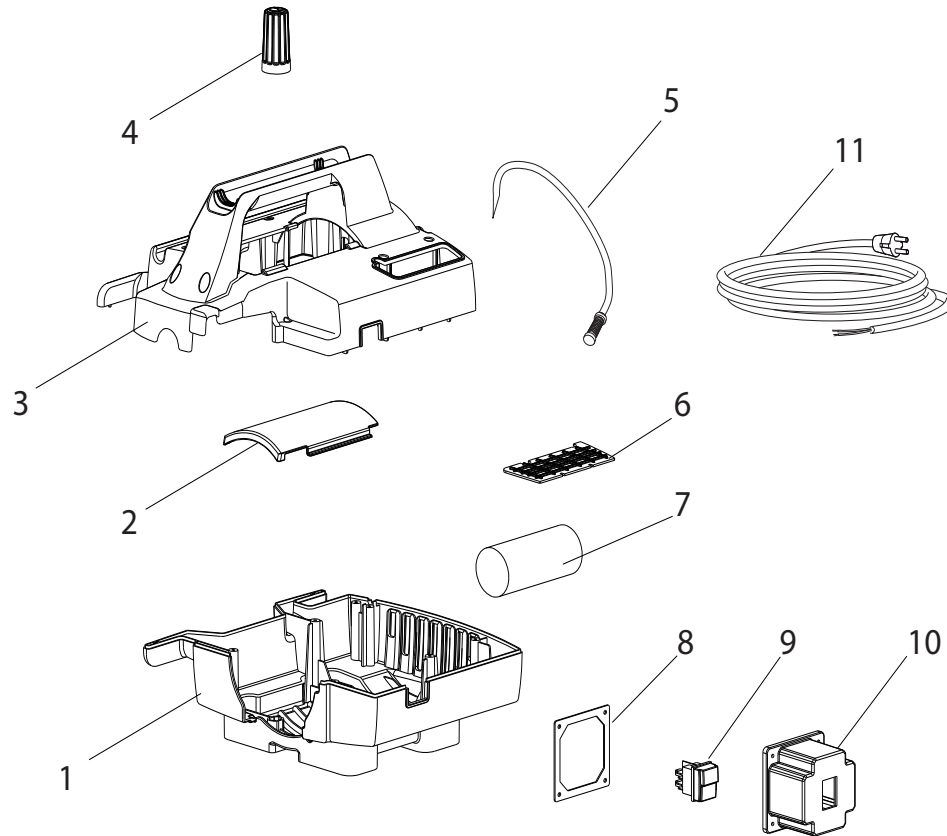
CODICE: 8.664.0001C REV.: 1 DESCRIZIONE: IDRO PARTNER 1210LP 230/50 -G- TS LWS (SP.SCHUKO)







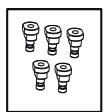
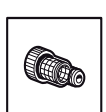
DATA INIZIO VAL.: 05/21/2011 DATA FINE VAL.: 01/01/3000

CODICE GRUPPO: R56010503C REV.: 1 DESCRIZIONE: MTP.LW 230/50 2P LP1210 C/INIETT. C/TS SCAT. EL. LATO TESTA

DATA INIZIO VAL.: 02/04/2011 DATA FINE VAL.: 01/01/3000 N. TAVOLA: E56010035/01

CODICE:	DESCRIZIONE:	QTA':	POS:	RIF1:	RIF2:
5.601.0524C	MOTORPUMP.LW 230/50 2P LP1210 W/INJECT. W/TS	1	00		
4.605.0108	HEAD LP 1210 (P56.0377)	1	01		
5.609.0254	BOX-MICRO-2X1,5 CABLE ASSEMBLY WITH PLUG HOLE FOR OMNIA 12	1	02		
6.005.0335	KIT 307 INJECTOR 1,8	1	03		
5.609.0154	KIT HOLDER RUBBER WITH ORING AND SPRING	1	04		
6.005.0330	KIT 302 VALVE FOR TPBH '10 HEAD	1	05		
6.005.0336	CAP FOR SUCTION VALVE	1	06		
6.005.0331	BUSHING FOR TPBH '10 HEAD	1	07		
6.005.0133	KIT 124 O-RING WATER SEAL PARTNER D.12	1	08		
6.605.0147	KIT BY PASS W/TS	1	09		
6.005.0079	KIT 79 LW OIL SEALS	1	10		
4.605.0109	CARTER LP 1210 (P56.0377)	1	11		
4.605.0110	BACK COVER LP 1210 (P56.0377)	1	12		
6.605.0156	KIT COMPONENTS CARTER FOR PUMP LP1210	1	13		
6.605.0155	KIT PISTON + PIN + PISTON ROD FOR PUMP LP1210 (3PCS)	1	14		
4.607.0622	PUMP SHAFT LP 1210 (P56.0377)	1	15		
3.001.0030	RADIAL	1	16		
5.006.0211	MOTOR D.125 h90 230/50 2P W/TERM. FOR PUMP LP1210	1	17		
6.605.0154	KIT FAN + RING + FAN FOR PUMP LP1210	1	18		
3.099.1616	FAN COVER FOR MOTOR D.125 - PUMP LP1210	1	19		
5.006.0211	MOTOR D.125 h90 230/50 2P W/TERM. FOR PUMP LP1210	1	20		
5.609.0257	PISTON BOBY GUIDE ASSEMBLY PUMP 2800rpm LP1210	1	21		
5.008.0250	LP1210 HEAD 3/4 INLET-.M22 OUTLET WITH SUCTION (ALUM.)	1	22		



- 12 — 
- 13 — 
- 14 — 
- 15 — 
- 16 — 
- 17 — 
- 18 — 
- 19 — 

LISTA RICAMBI

CODICE: 8.664.0001C REV.: 1 DESCRIZIONE: IDRO PARTNER 1210LP 230/50 -G- TS LWS (SP.SCHUKO)

DATA INIZIO VAL.: 05/21/2011 DATA FINE VAL.: 01/01/3000

CODICE GRUPPO: R86640001C REV.: 1 DESCRIZIONE: CHASSIS

DATA INIZIO VAL.: 05/21/2011 DATA FINE VAL.: 01/01/3000 N. TAVOLA: E8664C001/01

CODICE:	DESCRIZIONE:	QTA':	POS:	RIF1:	RIF2:
4.613.0325	LOWER COVER RAL7046 (PANT.430C)	1	01		
4.613.0327	TRANSPARENT COVER	1	02		
4.613.0326	UPPER COVER RAL.7046 (PANT.430C)	1	03		
6.605.0161	KIT EXTENSION FOR PRESSURE ADJUSTING KNOB FOR OMNIA HEAD	1	04		
5.012.0003	ASS.DETERGENT SUCTION FILTER HOSE MT.1	1	05		
4.608.0390	INNER COVER FOR DETERGENT SUCTION HOSE	1	06		
3.404.0016	CAPACITOR 45 mF 450V D.45X90 WITHOUT CABLE FASTON M	1	07		
4.608.0391	GASKET FOR ELECTIC BOX	1	08		
3.401.0178	SWITCH 0/1 BLACK BOTTON IP55 12/10	1	09		
4.608.0389	ELECTRIC BOX COVER	1	10		
4.012.0150	CABLE H05VV-F 3X1,5 MT.5,4 F/F SCHUKO PLUG	1	11		
6.001.0076	GUN S'09 WITH INTEGRAL QUICK JOINT	1	12		
4.018.0095	HOSE 1/4 160BAR L=6000 M22x1,5 D.15-RAPID FIX REV.02	1	13		
6.002.0325	LANCE L=500 WITH NOZZLES HOLDE R-TURNING QUICK JOINT-COGETIL	1	14		
6.002.0328	TURBO LANCE S'01 CONICAL HEAD D.1.2 RED L.470	1	15	OPT.	
3.601.0033	FIX BRUSH WITH ADAPT.REINFORCED COGETIL	1	16	OPT.	
3.601.0035	ROTATING HYDRO BRUSH WITH HANDLE	1	17	OPT.	
5.012.0282	5 NOZZLES KIT OF D.1,2 FOR QUICK JOINT GR.0-15-25-40FOAM	1	18		
3.100.0405	TRANSPARENT QUICK COUPLING INLET CONNECTOR WITH INSPECTIONABLE FILTER	1	19		