

LAVORWASH

SERVICE

Parts

CODE

8.517.0105

DESCRIPTION

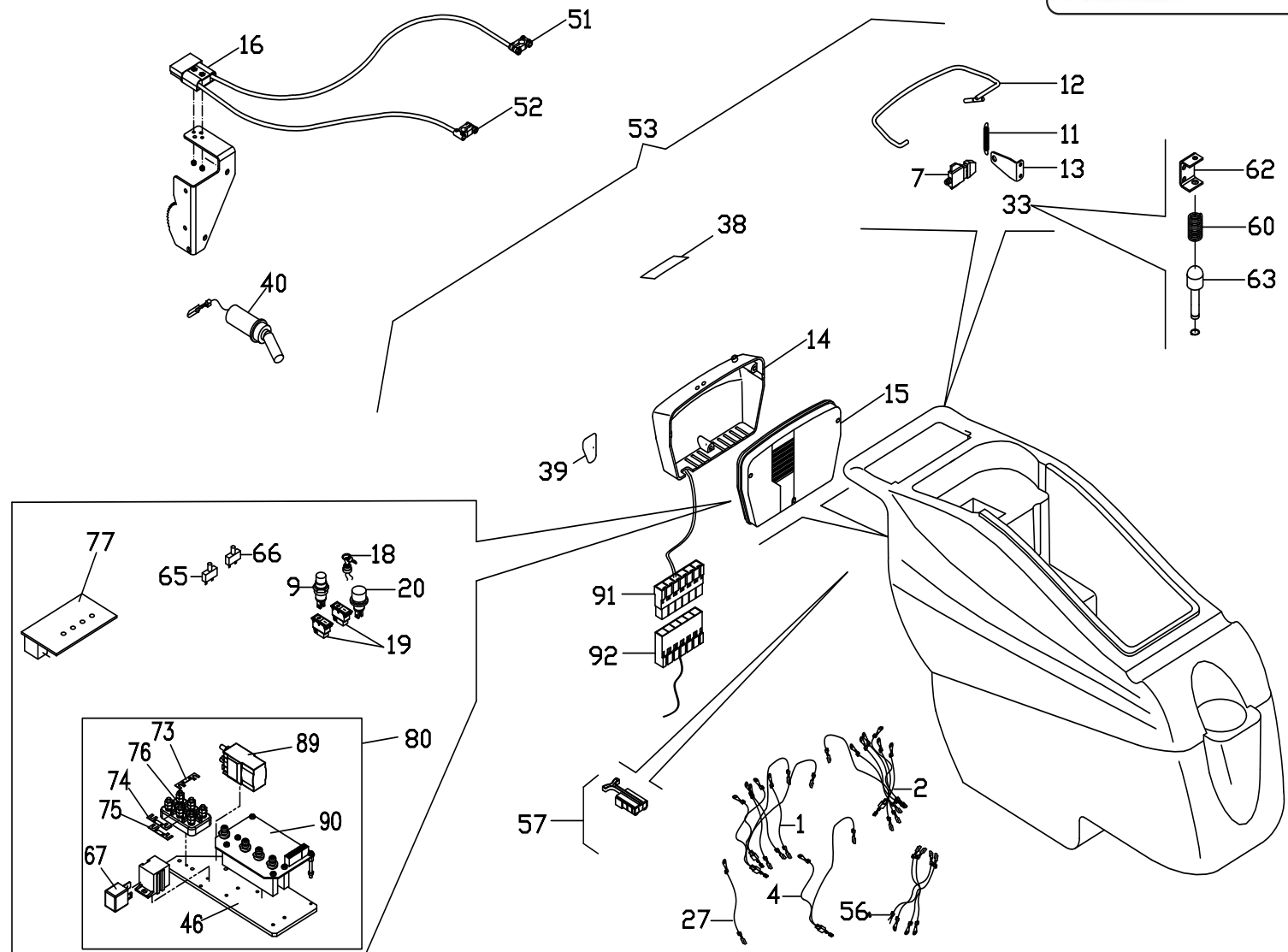
SCRUBBER DRIER SCL MIDI-R 75BTY/GRAY LWS

REVISION

15/6/2009

VALIDITÀ

WEEK 43 2013

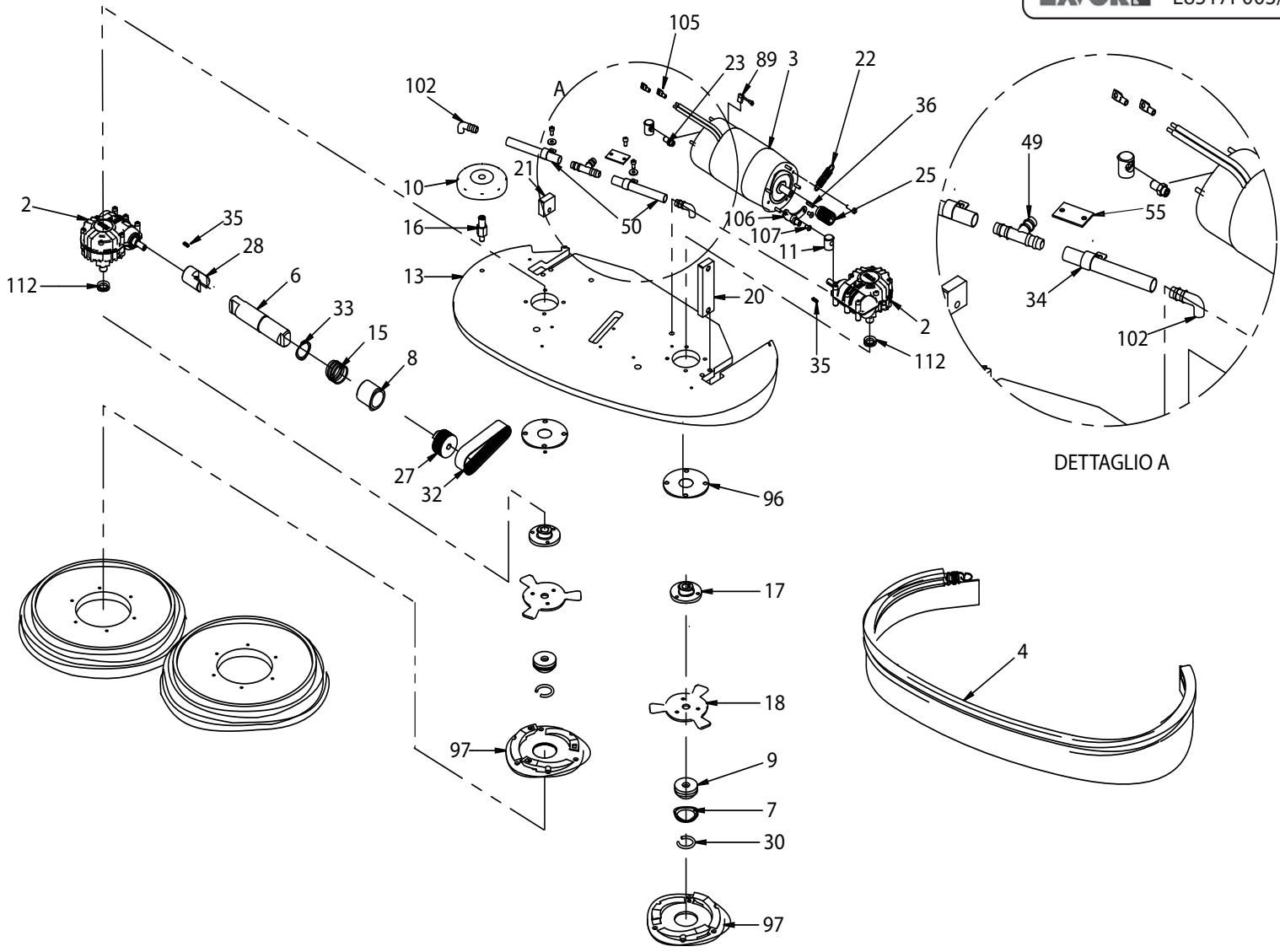


Pos.	Code	Price	Q.ty per	Qty.	Description	Alternative	Price	Q.ty per	Description
001	4.512.0040	26.05	1	1	COMPLETE ELECTRIC WIRING		0	0	
002	4.512.0041	40.54	1	1	COMPLETE ELECTRIC WIRING FOR TRACTION		0	0	
004	4.512.0042	10.42	3	1	COMPLETE ELECTRONIC WIRING FOR FLOAT MIDI-R		0	0	
007	3.401.0113	21.42	1	2	MICROSWITCH SAIA XGO2-88-J24		0	0	
009	3.499.0252	70.31	1	1	POTENTIOMETER 5K ELECT.WIRING 4WAY, WITH		0	0	
011	4.507.0522	2.43	10	1	SPRING		0	0	
012	4.507.0802	11.81	3	1	LEVER		0	0	
013	4.507.0659	21.42	1	1	CLAMP FOR TRACTION LEVER		0	0	
014	4.508.0701	58.71	1	1	ELECTRIC BOX COVER		0	0	
015	4.508.0397	21.42	1	1	ELECTRIC BOX SUPPORT		0	0	
018	3.499.0406	54.8	1	1	IGNITION KEY FOR ELECTRONIC DASHBOARD CARD	5.511.1566	32.14	1	KIT REPLACEMENT KEY
019	3.401.0139	21.42	1	2	DOUBLE-POLE SWITCH COMAREL 280218 BLACK		0	0	
020	3.403.0046	60.71	1	1	BATTERY CHARGE INDICATOR 810/24V		0	0	
027	4.512.0043	28.96	1	1	COMPLETE ELEC.WIRING BRUSH MOTOR MIDI.R		0	0	
033	5.509.0556	28.39	1	1	CONTROL LEVER ASSEMBLY		0	0	
039	7.503.0130	21.42	1	1	STICKER FOR THERMAL BREAKER LABEL		0	0	
040	5.511.0701	96	1	1	FLOATING SWITCH ASSEMBLY	5.511.1228	31.99	1	KIT SPARE PARTS FOR FLOATING
046	4.505.0195	0	1	1	PLATE FOR CIRCUIT BOARD		0	0	
051	3.405.0046	21.42	1	4	NEGATIVE BATTERY TERMINAL		0	0	
052	3.405.0047	21.42	1	4	POSITIVE BATTERY TERMINAL		0	0	
053	5.511.0780	953.24	1	1	ELECTRIC BOX WITH HARNESS		0	0	
056	4.512.0044	34.25	1	1	COMPLETE ELEC.WIRING FOR ASP.AND TRACTION		0	0	
057	4.512.0045	57.63	1	1	COMPLETE ELEC.WIRING W/CONNECT 80A AND		0	0	
059	3.499.0248	21.42	1	1	HANDLE FOR CONNECTOR 80A		0	0	
060	4.007.0135	1.35	20	1	SPRING		0	0	
062	4.507.0497	3.37	8	1	PIN SUPPORT		0	0	
063	4.507.0498	1.14	20	1	PIN FOR LEVER		0	0	
065	3.401.0076	21.42	1	1	THERMAL CIRCUIT BREAKER 40A SM7400		0	0	
066	3.401.0073	21.42	1	1	THERMAL CIRCUIT BREAKER 12A SM7120		0	0	
067	3.402.0017	21.42	1	1	RELAY AUTOMOTIVE CB1AH-24V 70A		0	0	
073	3.499.0341	10.71	2	1	STRIP FUSE 30A		0	0	
074	3.499.0135	10.71	2	1	STRIP FUSE 60A		0	0	
075	3.499.0030	7.23	3	1	STRIP FUSE 80A		0	0	
076	3.405.0045	6.12	4	1	TERMINAL BOARD MEC584 70-45		0	0	

8.517.0105

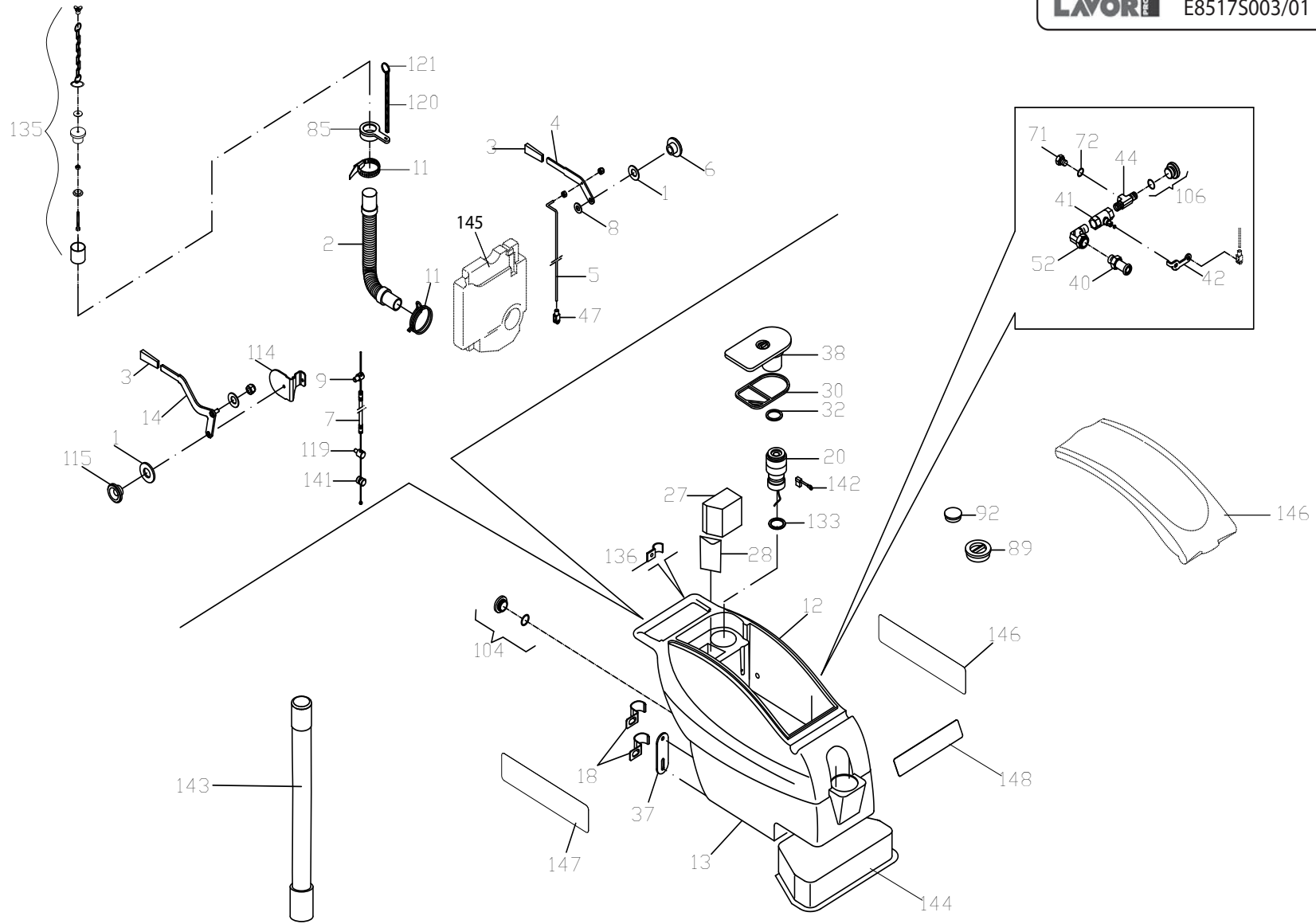
R55090757-3

CONTROL SYSTEM



Pos.	Code	Price	Q.ty per	Qty.	Description	Alternative	Price	Q.ty per	Description
002	5.509.0016	153.42	1	2	REDUCTION GEAR	5.511.0533	252.9	1	REDUCTION GEAR ASSEMBLY
003	5.501.0003	646.1	1	1	BRUSH MOTOR 24V-1000W		0	0	
004	5.511.1064	130.25	1	1	BUMPER ASSEMBLY - MIDI 75		0	0	
006	4.508.1200	67.66	1	1	GEAR REDUCTOR CONNECTION AXLE		0	0	
007	4.508.0314	7.23	3	2	OPENED RING		0	0	
008	4.508.0299	21.42	1	1	NYLON CENTRING BUSHING		0	0	
009	4.508.0290	10.71	2	2	BRUSH COUPLING CENTERING BUSHING		0	0	
010	4.508.0224	10.71	2	1	BUMPER WHEEL D.110 GREY		0	0	
011	4.508.0151	84	1	2	WHEEL 160X40	3.006.0110	41.84	1	WHEEL D.160 HOLE 20X56
013	4.507.1133	448.23	1	1	BRUSH PLATE		0	0	
015	4.507.0335	21.42	1	1	COMPRESSION SPRING		0	0	
016	4.507.0308	21.42	1	1	SUPPORT FOR BUMPER WHEEL		0	0	
017	4.507.0302	21.42	1	2	BRUSH COUPLING FLANGE		0	0	
018	4.507.0300	21.42	1	2	BRUSH COUPLING		0	0	
020	4.507.0094	21.42	1	1	BAR G/F 21 - LONG		0	0	
021	4.507.0093	21.42	1	1	BAR G/F 21 - SHORT		0	0	
022	4.507.0090	21.42	1	1	SPRING		0	0	
023	4.506.0055	21.42	1	2	BUSHING FOR MOTOR SUPPORT		0	0	
025	4.505.0184	53.44	1	1	DRIVEN PULLEY		0	0	
027	4.505.0054	33.04	1	1	DRIVEN PULLEY - KRON S1		0	0	
028	4.505.0032	21.42	1	1	RING NUT		0	0	
030	3.200.0127	10.71	2	2	O-RING D=5.34 L=106		0	0	
032	3.099.0856	51.44	1	1	BELT POLY-V 130J 330 H=12		0	0	
033	3.099.0544	1.07	20	1	SEEGER RING D=35 UNI 7435-35		0	0	
034	3.099.0329	10.71	2	2	HOSE CLAMP D.20 ZNT		0	0	
035	3.099.0306	1.07	20	2	FEATER KEY 4X4X15 UNI 6604A		0	0	
036	3.099.0054	1.07	20	1	FEATHER KEY 5X5X20 UNI 6604		0	0	
037	3.099.0013	1.07	20	2	FEATHER KEY 5X5X15		0	0	
049	3.100.0113	1.07	20	1	UNION TEE D.16 BLACK		0	0	
050	3.752.0161	0	1	2	WATER HOSE	3.099.1278	48.99	1	HOSE ARMONVILLE D INT=14 L=150KRON ZERO
055	4.507.0104	3.53	10	1	SUPPORT FOR SQUEEGEE LIFT LEVER		0	0	
089	3.499.0069	21.42	1	2	CARBON BRUSH -CRB0000002-		0	0	
096	4.507.1091	21.42	1	2	PROTECTING COVER FOR REDUCTIONGEAR		0	0	
097	4.508.1192	10.71	2	2	UNIFIED FLANGE FOR BRUSH COUPLING		0	0	

8.517.0105	R55091111-1	BRUSH PLATE
-------------------	--------------------	--------------------

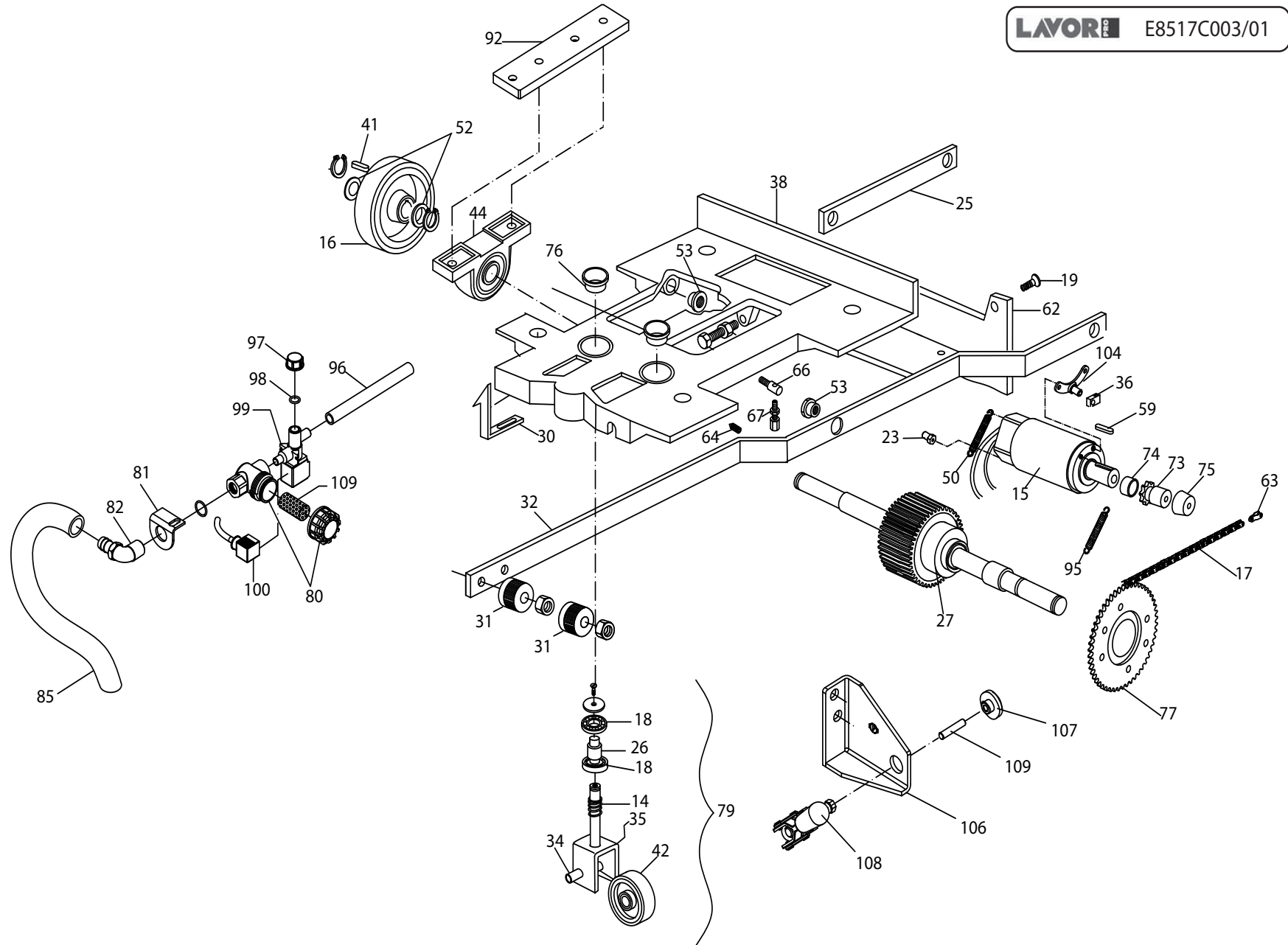


Pos.	Code	Price	Q.ty per	Qty.	Description	Alternative	Price	Q.ty per	Description
001	3.004.0124	1.07	20	2	SPRING WASHER 10.5X18X0.8 DIN137A		0	0	
002	3.752.0077	21.42	1	1	SUCTION HOSE D.51		0	0	
003	4.508.0971	21.42	1	2	HANDLE SPECIAL LEVEL (15X4)		0	0	
004	4.507.0495	6.49	4	1	LEVER FOR WATER TAP		0	0	
005	4.507.0905	26.32	1	1	TIE ROD FOR WATER TAP		0	0	
006	4.506.0094	1.07	20	1	BUSHING		0	0	
007	3.099.1331	11.91	2	1	SQUEEGEE LIFT CABLE	5.511.1490	47.13	1	KIT RICAMBIO PER CAVO SOLL. SQUEEGGE MIDI-R
009	4.507.1206	10.71	2	1	PIN FOR CABLE WITH SLEEVE		0	0	
010	4.507.0886	21.42	1	1	STOP CLAMP		0	0	
011	3.099.0497	6.9	4	2	CLAMP 50/70	3.099.0588	10.71	2	CLAMP 50-65 H=12
012	4.508.0469	838.5	1	1	SOLUTION TANK	4.508.0878	863.66	1	RECOVERY TANK - LIGHT GREY
013	4.508.0105	364.93	1	1	SOLUTION TANK F2 - DARK GREY		0	0	
014	5.513.0144	21.42	1	1	SQUEEGEE LIFTING LEVER		0	0	
018	3.099.0329	10.71	2	2	HOSE CLAMP D.20 ZNT		0	0	
020	5.511.0781	245.62	1	1	SUCTION MOTOR ASSEMBLY		0	0	
021	4.508.0518	1.39	20	1	PROTECTION		0	0	
027	4.508.0473	21.42	1	1	AIRFOAM FILTER		0	0	
028	4.507.0530	21.42	1	1	SUCTION BUFFLE PLATE		0	0	
030	4.508.0471	21.42	1	1	GASKET FOR SUCTION PANEL		0	0	
032	4.508.0472	21.42	1	1	GASKET FOR SUCTION PANEL		0	0	
037	4.508.0115	1.07	20	2	TANK COUPLING CLAMP		0	0	
038	4.508.0402	82.52	1	1	COVER	5.511.1470	133.09	1	KIT COVER + SEALS FOR VACUUM MOTOR
040	3.100.0110	10.71	2	1	HOSE FITTING UNION 1/2		0	0	
041	3.099.0333	26.78	1	1	BALL VALVE 1/2" F/F		0	0	
042	4.507.0235	21.42	1	1	WATER VALVE LEVER		0	0	
044	3.100.0111	21.42	1	1	UNION TEE 1/2 F.M.M		0	0	
047	3.099.0337	21.42	1	1	WATER GEAR CONTROL M6+CLIP		0	0	
052	3.100.0074	21.42	1	1	UNION ELBOW 1/2 M 1/2 F		0	0	
072	3.200.0111	1.07	20	1	O-RING 4087 - 29.06X3,53		0	0	
085	4.508.0283	21.42	1	1	HOSE COUPLING		0	0	
089	4.508.0534	21.42	1	1	SOLUTION TANK CAP		0	0	
092	4.508.0395	6.36	4	1	BATTERY COMPARTMENT CAP		0	0	
104	5.511.0203	21.42	1	1	RECOVERY TANK CAP ASSEMBLY		0	0	
106	5.511.0937	21.42	1	1	TANK DRAIN CAP ASSY		0	0	

8.517.0105

R55091422-1

TANK



Pos.	Code	Price	Q.ty per	Qty.	Description	Alternative	Price	Q.ty per	Description
014	4.507.0171	4.5	6	2	SPRING FOR PIVOTTING WHEEL		0	0	
015	5.501.0032	474.26	1	1	TRACTION MOTOR 24V 300W 500G		0	0	
016	4.508.0289	64.12	1	2	SUPERLAST WHEEL 200X50	5.511.1535	81.41	1	KIT SOSTITUZIONE RUOTA TRAZ. F2 CON 80ShA
017	3.099.1404	84.78	1	1	CHAIN 06-B1 3/8 L=720mm		0	0	
018	3.001.0052	21.42	1	4	BEARING 6005 2RS 25X47X12		0	0	
019	3.099.1030	1.09	20	3	PLASTIC RIVET		0	0	
023	4.506.0045	2.77	10	1	BUSHING FOR TRACTION MOTOR SUPPORT		0	0	
025	4.507.1083	81.56	1	1	BAR		0	0	
026	4.508.0159	21.42	1	2	PIVOTING WHEEL BUSHING		0	0	
027	5.511.0022	343.36	1	1	DIFFERENTIAL GEAR ASSEMBLY - F2		0	0	
030	4.507.0284	21.42	1	1	HOOK FOR FRAME		0	0	
031	4.507.0039	2.2	10	2	PEDAL FOR BRUSH LIFT LEVER		0	0	
032	5.513.0203	141.16	1	1	FOOT LEVER FOR BRUSH PLATE		0	0	
034	4.507.1131	21.42	1	2	PIPE SPACER		0	0	
035	5.513.0181	65.46	1	2	PIVOTING WHEEL SUPPORT - F2		0	0	
036	4.507.0072	21.42	1	2	TRACTION MOTOR SUPPORT		0	0	
038	4.505.0200	376.61	1	1	FRAME		0	0	
041	3.099.0323	1.07	20	2	FEATHER KEY 6X6X30 UNI 6604A		0	0	
042	3.006.0043	30.58	1	1	WHEEL D.100 RED W/BEARING		0	0	
044	3.001.0047	21.42	1	2	STRAIGHT SUPPORT D.20		0	0	
050	4.507.0076	3.43	10	1	SPRING		0	0	
052	4.508.0152	1.07	20	4	WASHER		0	0	
053	4.506.0039	2.22	10	2	THREADED BUSHING		0	0	
059	3.099.0322	1.07	20	1	FEATHER KEY 3X3X15 UNI 6604A		0	0	
062	4.508.1201	21.42	1	1	SPLASH GUARD		0	0	
063	3.099.0495	2.16	20	1	CHAIN LINK FOR CHAIN 3/8 06 B-2		0	0	
066	4.507.0089	2.96	10	1	SUPPORT FOR BRAKE ADJUSTER		0	0	
067	3.099.0364	2.14	10	1	SCREW REGULATOR M8X40 CH12 F.9.5 +NUT		0	0	
073	4.507.0299	34.08	1	1	PIN Z8 3/8 - F26		0	0	
074	4.507.0236	1.59	20	1	SPACER		0	0	
075	4.507.0237	3.54	7	1	CLAMP BUSHING		0	0	
076	4.508.1222	9.61	3	2	HOLE-COVER CAP		0	0	
077	4.507.0481	55.26	1	1	CROWN WHEEL 3/8 Z=45		0	0	
079	5.511.0214	111.21	1	2	PIVOTING WHEEL F2 ASSEMBLY		0	0	

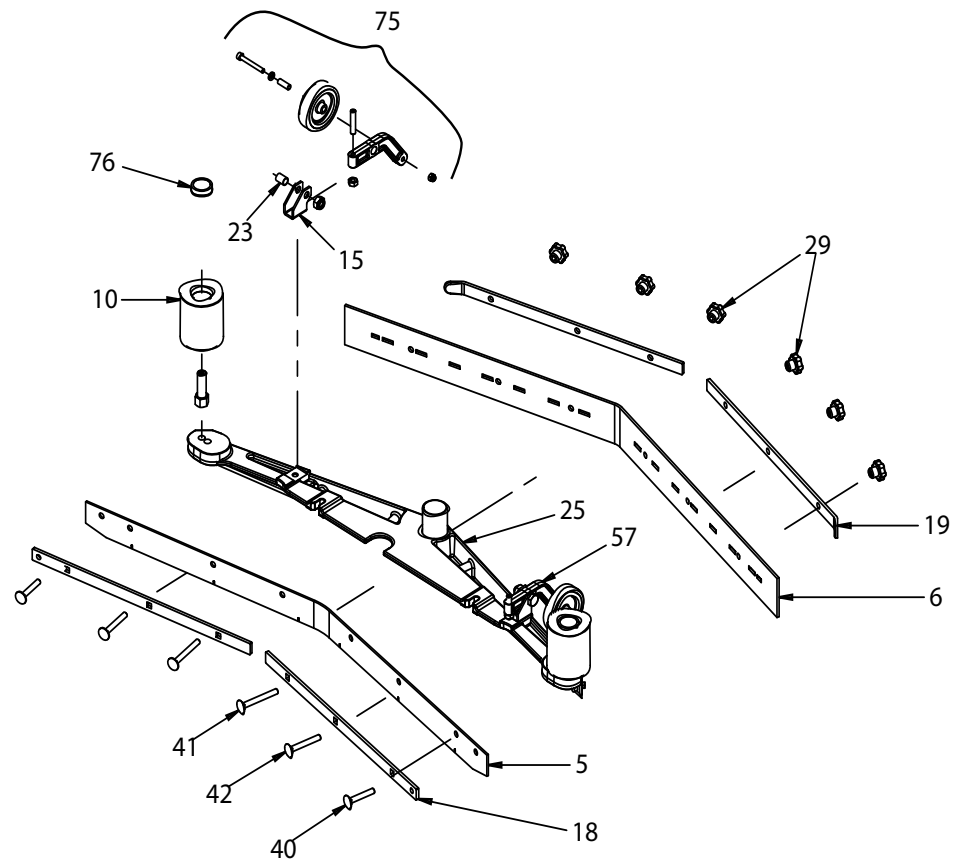
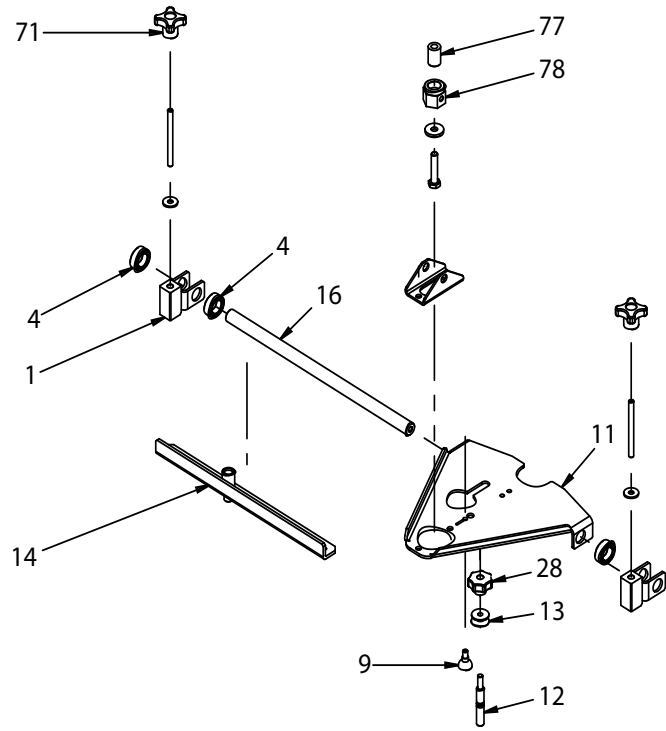
8.517.0105

R55091497-1

FRAME

Pos.	Code	Price	Q.ty per	Qty.	Description	Alternative	Price	Q.ty per	Description
080	3.102.0012	45	1	1	WATER FILTER KRON ZERO	3.749.0299	36.05	1	F5 G1/2F/F WATER FILTER
081	4.507.0901	21.42	1	1	FILTER HOLDER PLATE		0	0	
082	4.508.1288	1	20	1	NYLON JOINT 90'	3.100.0218	2.14	10	HOSE FITTING UNION ELBOW
085	3.099.1090	4.28	6	1	HOSE ARMONVILLE D.int.=14 L=370		0	0	
092	4.507.1082	30.94	1	2	PLATE		0	0	
095	4.507.0092	21.42	1	1	SPRING		0	0	
096	3.752.0156	0	1	1	WATER HOSE		0	0	
097	3.099.1032	2.44	10	1	CAP 1/2		0	0	
098	3.200.0187	1.07	20	1	O-RING 3056		0	0	
099	3.412.0027	91.05	1	1	SOLENOID VALVE 1/2		0	0	
100	4.512.0072	24.18	1	1	CABLE FOR SOLENOID VALVE L=1300mm		0	0	
103	3.004.0112	1.07	20	1	WASHER D.15X28 Sp.2.5 UNI 6592INOX		0	0	
104	5.513.0241	0	1	1	SUPPORT FOR MOTOR (CHAIN SIDE)		0	0	
106	4.507.1288	0	1	1	SUPPORT FOR BRAKE		0	0	
107	4.507.1267	4.52	6	1	STOPPER FOR BRAKE		0	0	
108	3.099.1415	88.3	1	1	HANDLE BRAKE		0	0	
109	3.102.0013	10.71	2	1	SPARE PART FOR WATER FILTER KRON ZERO		0	0	

8.517.0105	R55091497-1	FRAME
-------------------	--------------------	--------------



Pos.	Code	Price	Q.ty per	Qty.	Description	Alternative	Price	Q.ty per	Description
001	5.513.0170	64.68	1	2	DIE-CAST SQUEEGEE SUPPORT		0	0	
004	4.508.0647	8.57	3	4	SPACER		0	0	
005	4.508.0646	16.55	2	1	FRONT SQUEEGEE BLADE		0	0	
006	4.508.0605	41.77	1	1	REAR SQUEEGEE BLADE		0	0	
009	4.506.0125	21.42	1	1	SUPPORT BAR		0	0	
010	4.508.1210	53.44	1	2	BUMPER WHEEL		0	0	
011	4.507.1028	80.42	1	1	SQUEEGEE SUPPORT		0	0	
012	4.507.1014	21.42	1	1	PIN FOR SQUEEGEE ADJUSTER		0	0	
013	4.507.1013	7.54	4	1	ADJUSTING SCREW		0	0	
014	4.507.0987	101.38	1	1	ANTIROTATION BAR		0	0	
015	4.507.0986	21.42	1	2	WHEEL LEVER SUPPORT		0	0	
016	4.507.0985	35.78	1	1	SQUEEGEE AXIS		0	0	
018	4.507.0749	28.35	1	2	BLADE HOLDER - FRONT		0	0	
019	4.507.0748	21.42	1	2	BLADE HOLDER - REAR		0	0	
023	4.506.0198	2.05	20	2	SPACER		0	0	
024	4.506.0132	1.37	20	2	BUSHING		0	0	
025	4.505.0168	281.9	1	1	SQUEEGEE - KRON ZERO		0	0	
026	4.505.0123	12.3	2	2	SQUEEGEE WHEEL SUPPORT ARM		0	0	
028	3.099.1189	21.42	1	1	KNOB M8 H26		0	0	
029	3.099.0467	10.71	2	6	KNOB M8		0	0	
030	3.006.0072	10.71	2	2	SQUEEGEE WHEEL FOR KRON ZERO 8/75/H21/ H18		0	0	
040	3.002.0626	3.13	8	2	SCREW M8X50 UNI 5731 INOX		0	0	
041	3.002.0611	1.97	20	2	SCREW M8X70 UNI 5731 INOX		0	0	
042	3.002.0610	1.87	20	2	SCREW M8X60 UNI 5731 INOX		0	0	
057	5.511.1078	21.42	1	1	LEFT SQUEEGEE WHEEL ASSEMBLY		0	0	
071	3.099.1218	21.42	1	2	KNOB M8		0	0	
075	5.511.1253	21.42	1	1	RIGHT SQUEEGEE WHEEL ASSEMBLY		0	0	
076	3.099.1399	1.07	20	2	CAP FOR BUMPER WHEEL		0	0	
077	4.506.0246	11.14	3	1	VERTICAL ARTICULATED JOINT		0	0	
078	4.507.1214	20.6	1	1	HORIZONTAL ARTICULATED JOINT		0	0	
079	4.507.1213	32.39	1	1	SUPPORT FOR ARTICULATED JOINT		0	0	

8.517.0105	R55091500-1	SQUEEGEE
-------------------	--------------------	-----------------

Code	Exploded View	Pos.	Qty
3.001.0047	R55091497-1	044	2
3.001.0052	R55091497-1	018	4
3.002.0610	R55091500-1	042	2
3.002.0611	R55091500-1	041	2
3.002.0626	R55091500-1	040	2
3.002.0752	R55091111-1	107	2
3.004.0112	R55091497-1	103	1
3.004.0124	R55091422-1	001	2
3.006.0043	R55091497-1	042	1
3.006.0072	R55091500-1	030	2
3.099.0013	R55091111-1	037	2
3.099.0045	R55091111-1	112	2
3.099.0054	R55091111-1	036	1
3.099.0306	R55091111-1	035	2
3.099.0322	R55091497-1	059	1
3.099.0323	R55091497-1	041	2
3.099.0329	R55091111-1	034	2
	R55091422-1	018	2
3.099.0333	R55091422-1	041	1
3.099.0337	R55091422-1	047	1
3.099.0364	R55091497-1	067	1
3.099.0467	R55091500-1	029	6
3.099.0495	R55091497-1	063	1
3.099.0497	R55091422-1	011	2
3.099.0544	R55091111-1	033	1
3.099.0827	R55091422-1	136	1
3.099.0856	R55091111-1	032	1
3.099.1030	R55091497-1	019	3
3.099.1032	R55091497-1	097	1
3.099.1090	R55091497-1	085	1
3.099.1189	R55091500-1	028	1
3.099.1218	R55091500-1	071	2
3.099.1331	R55091422-1	007	1
3.099.1399	R55091500-1	076	2

Code	Exploded View	Pos.	Qty
3.099.1404	R55091497-1	017	1
3.099.1412	R55091422-1	141	1
3.099.1415	R55091497-1	108	1
3.100.0074	R55091422-1	052	1
3.100.0110	R55091422-1	040	1
3.100.0111	R55091422-1	044	1
3.100.0113	R55091111-1	049	1
3.102.0012	R55091497-1	080	1
3.102.0013	R55091497-1	109	1
3.200.0111	R55091422-1	072	1
3.200.0127	R55091111-1	030	2
3.200.0187	R55091497-1	098	1
3.299.0015	R55091422-1	133	1
3.401.0073	R55090757-3	066	1
3.401.0076	R55090757-3	065	1
3.401.0113	R55090757-3	007	2
3.401.0139	R55090757-3	019	2
3.402.0017	R55090757-3	067	1
3.402.0041	R55090757-3	089	1
3.403.0046	R55090757-3	020	1
3.405.0045	R55090757-3	076	1
3.405.0046	R55090757-3	051	4
3.405.0047	R55090757-3	052	4
3.405.0116	R55091111-1	105	2
3.412.0027	R55091497-1	099	1
3.499.0030	R55090757-3	075	1
3.499.0069	R55091111-1	089	2
3.499.0071	R55091422-1	142	2
3.499.0135	R55090757-3	074	1
3.499.0141	R55090757-3	091	1
3.499.0144	R55090757-3	092	1
3.499.0248	R55090757-3	059	1
3.499.0252	R55090757-3	009	1
3.499.0341	R55090757-3	073	1

Code	Exploded View	Pos.	Qty
3.499.0350	R55090757-3	090	1
3.499.0406	R55090757-3	018	1
3.752.0077	R55091422-1	002	1
3.752.0156	R55091497-1	096	1
3.752.0161	R55091111-1	050	2
4.007.0135	R55090757-3	060	1
4.505.0032	R55091111-1	028	1
4.505.0054	R55091111-1	027	1
4.505.0123	R55091500-1	026	2
4.505.0168	R55091500-1	025	1
4.505.0184	R55091111-1	025	1
4.505.0195	R55090757-3	046	1
4.505.0200	R55091497-1	038	1
4.506.0039	R55091497-1	053	2
4.506.0045	R55091497-1	023	1
4.506.0055	R55091111-1	023	2
4.506.0094	R55091422-1	006	1
4.506.0125	R55091500-1	009	1
4.506.0132	R55091500-1	024	2
4.506.0198	R55091500-1	023	2
4.506.0225	R55091422-1	115	1
4.506.0246	R55091500-1	077	1
4.507.0039	R55091497-1	031	2
4.507.0072	R55091497-1	036	2
4.507.0076	R55091497-1	050	1
4.507.0089	R55091497-1	066	1
4.507.0090	R55091111-1	022	1
4.507.0092	R55091497-1	095	1
4.507.0093	R55091111-1	021	1
4.507.0094	R55091111-1	020	1
4.507.0104	R55091111-1	055	1
4.507.0171	R55091497-1	014	2
4.507.0235	R55091422-1	042	1
4.507.0236	R55091497-1	074	1

Code	Exploded View	Pos.	Qty
4.507.0237	R55091497-1	075	1
4.507.0284	R55091497-1	030	1
4.507.0299	R55091497-1	073	1
4.507.0300	R55091111-1	018	2
4.507.0302	R55091111-1	017	2
4.507.0308	R55091111-1	016	1
4.507.0335	R55091111-1	015	1
4.507.0481	R55091497-1	077	1
4.507.0495	R55091422-1	004	1
4.507.0497	R55090757-3	062	1
4.507.0498	R55090757-3	063	1
4.507.0522	R55090757-3	011	1
4.507.0530	R55091422-1	028	1
4.507.0659	R55090757-3	013	1
4.507.0748	R55091500-1	019	2
4.507.0749	R55091500-1	018	2
4.507.0802	R55090757-3	012	1
4.507.0886	R55091422-1	010	1
4.507.0901	R55091497-1	081	1
4.507.0905	R55091422-1	005	1
4.507.0985	R55091500-1	016	1
4.507.0986	R55091500-1	015	2
4.507.0987	R55091500-1	014	1
4.507.1013	R55091500-1	013	1
4.507.1014	R55091500-1	012	1
4.507.1028	R55091500-1	011	1
4.507.1082	R55091497-1	092	2
4.507.1083	R55091497-1	025	1
4.507.1091	R55091111-1	096	2
4.507.1131	R55091497-1	034	2
4.507.1133	R55091111-1	013	1
4.507.1168	R55091422-1	114	1
4.507.1206	R55091422-1	009	1
4.507.1213	R55091500-1	079	1

Code	Exploded View	Pos.	Qty
4.507.1214	R55091500-1	078	1
4.507.1267	R55091497-1	107	1
4.507.1288	R55091497-1	106	1
4.508.0105	R55091422-1	013	1
4.508.0115	R55091422-1	037	2
4.508.0151	R55091111-1	011	2
4.508.0152	R55091497-1	052	4
4.508.0159	R55091497-1	026	2
4.508.0224	R55091111-1	010	1
4.508.0283	R55091422-1	085	1
4.508.0289	R55091497-1	016	2
4.508.0290	R55091111-1	009	2
4.508.0299	R55091111-1	008	1
4.508.0314	R55091111-1	007	2
4.508.0395	R55091422-1	092	1
4.508.0397	R55090757-3	015	1
4.508.0402	R55091422-1	038	1
4.508.0469	R55091422-1	012	1
4.508.0470	R55091422-1	146	1
4.508.0471	R55091422-1	030	1
4.508.0472	R55091422-1	032	1
4.508.0473	R55091422-1	027	1
4.508.0518	R55091422-1	021	1
4.508.0534	R55091422-1	089	1
4.508.0564	R55091422-1	145	1
4.508.0605	R55091500-1	006	1
4.508.0646	R55091500-1	005	1
4.508.0647	R55091500-1	004	4
4.508.0701	R55090757-3	014	1
4.508.0971	R55091422-1	003	2
4.508.1192	R55091111-1	097	2
4.508.1200	R55091111-1	006	1
4.508.1201	R55091497-1	062	1
4.508.1210	R55091500-1	010	2

Code	Exploded View	Pos.	Qty
4.508.1222	R55091497-1	076	2
4.508.1245	R55091111-1	102	2
4.508.1288	R55091497-1	082	1
4.512.0040	R55090757-3	001	1
4.512.0041	R55090757-3	002	1
4.512.0042	R55090757-3	004	1
4.512.0043	R55090757-3	027	1
4.512.0044	R55090757-3	056	1
4.512.0045	R55090757-3	057	1
4.512.0072	R55091497-1	100	1
4.513.0336	R55091422-1	144	1
4.515.0003	R55090757-3	077	1
5.501.0003	R55091111-1	003	1
5.501.0032	R55091497-1	015	1
5.509.0016	R55091111-1	002	2
5.509.0556	R55090757-3	033	1
5.511.0022	R55091497-1	027	1
5.511.0203	R55091422-1	104	1
5.511.0214	R55091497-1	079	2
5.511.0701	R55090757-3	040	1
5.511.0780	R55090757-3	053	1
5.511.0781	R55091422-1	020	1
5.511.0937	R55091422-1	106	1
5.511.1064	R55091111-1	004	1
5.511.1078	R55091500-1	057	1
5.511.1135	R55091422-1	143	1
5.511.1253	R55091500-1	075	1
5.511.1338	R55091422-1	135	1
5.511.1524	R55090757-3	080	1
5.513.0144	R55091422-1	014	1
5.513.0170	R55091500-1	001	2
5.513.0181	R55091497-1	035	2
5.513.0203	R55091497-1	032	1
5.513.0222	R55091111-1	106	1

