

LAVORWASH

SERVICE

Parts

CODE

8.501.0508

DESCRIPTION

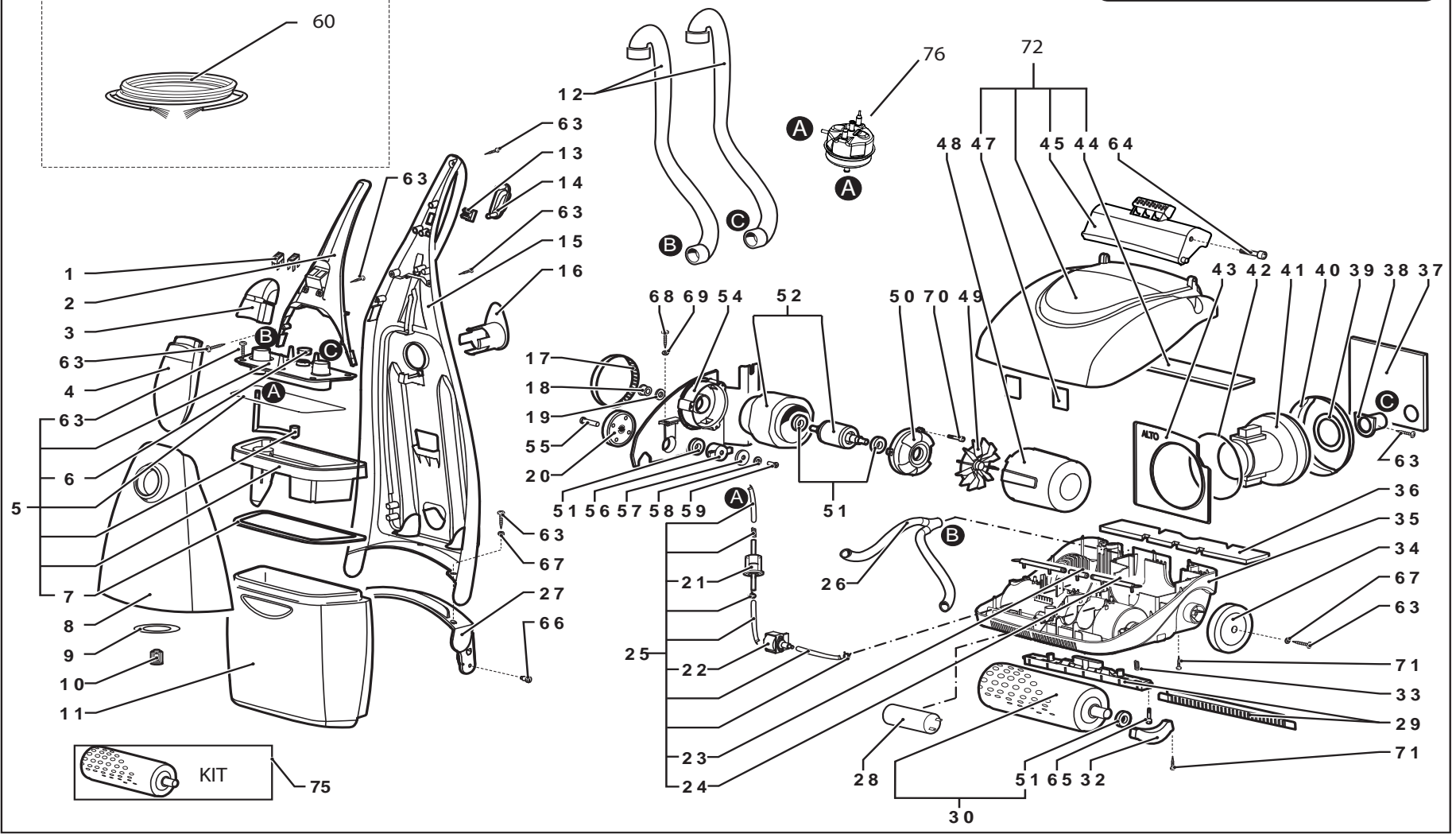
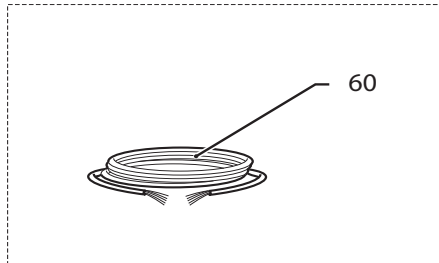
**FLOOR SCRUBBER DRIER CRYSTAL CLEAN
230V/50HZ LAVOR PRO**

REVISION

1/9/2010

VALIDITÀ

WEEK 26 2014



Pos.	Code	Price	Q.ty per	Qty.	Description	Alternative	Price	Q.ty per	Description
001	5.009.0482	10.71	2	2	SWITCH + PROTECTION COVER ASSEMBLY		0	0	
002	4.508.0012	22.92	1	1	UPPER COVER HANDLE GREY RAL 7043B		0	0	
003	4.508.1474	3.43	6	1	SWITCH ON/OFF COVER (RED)		0	0	
004	4.508.1473	4.58	5	1	TANK CAP (RED)		0	0	
005	5.509.1838	42.8	1	1	ASSEMBLY FOR FILTER (RED) BY-PASS D.10		0	0	
006	4.508.0026	3.31	7	1	VALVE RUBBER GASKET NR-EPDM 55SH MW	6.505.0041	4.88	5	KIT MANUTENZIONE SERBATOIO MW
007	4.508.0029	2.8	8	1	FILTER GASKET 10X12 L=700		0	0	
008	5.509.0415	35.07	1	1	GREY SOLUTION TANK WITH WASHERAND GASKET		0	0	
009	4.508.0046	5	4	1	SOLUTION TANK GASKET DIAM. 46X18 SP.2 MW	6.505.0041	4.88	5	KIT MANUTENZIONE SERBATOIO MW
010	5.509.0013	3	7	1	VALVE FOR TANK MW	6.505.0041	4.88	5	KIT MANUTENZIONE SERBATOIO MW
011	4.508.0459	39.66	1	1	BLACK WATER TANK (GREY)		0	0	
012	5.509.0008	22.92	1	2	ASSY FLEXIBLE HOSE L.800 MW		0	0	
013	3.401.0181	3.7	6	1	SWITCH FOR CHEMICAL/WATER		0	0	
014	4.508.0021	1.2	17	1	SOLUTION ACTUATOR GREY RAL 7043B		0	0	
015	4.508.1476	53.5	1	1	REAR HANDLE COVER (GREY)		0	0	
016	4.508.0023	2.6	8	1	CABLE HOLDER MW GREY RAL 7043B		0	0	
017	3.099.0278	22.49	1	1	BELT 336 RPP3-12		0	0	
018	4.507.0001	5.1	4	1	PULLEY Z20 MW		0	0	
019	4.506.0001	1.91	11	1	WASHER		0	0	
020	4.508.0042	8.3	3	1	PULLEY FOR BRUSH		0	0	
021	3.102.0003	5.74	4	1	DIESEL FUEL FILTER FB13	3.102.0006	5.63	4	FB6A GASOIL FILTER (30 MICRONPAPER)
022	3.551.0019	27.33	1	1	SOLUTION PUMP 230-240V - 50Hz	3.551.0032	34.6	1	DETERGENT PUMP NME 1C 230-240/50
023	4.508.0034	3.79	6	1	DISPENSER CONNECTION		0	0	
024	4.508.0033	3.79	6	2	SOLUTION DISPENSER		0	0	
025	5.509.0009	21.19	2	1	DIFFUSER ASSY+230V PUMP+ FILTER+SOLUTION	5.509.1226	60.74	1	DIFFUSER ASSY+230V PUMP+ FILTER+SOLUTION
026	5.509.0012	22.92	1	1	JOINT ASSY Y+FLEX HOSES MW.		0	0	
027	4.505.0003	22.49	1	1	HANDLE SUPPORT		0	0	
028	3.404.0053	5.9	4	1	CAPACITOR 8 MF D.35X57 FASTONF.		0	0	
029	5.509.0010	11.46	2	2	SQUEEGEE + SUPPORT ASSEMBLY		0	0	
030	5.509.0002	12.33	2	1	BRUSH + BEARING ASSEMBLY	6.505.0002	33.75	1	KIT 2 LWS SET OF MW BRUSH WITH BRISTLES
032	4.508.0001	4.42	5	1	U BUSH LOCKING		0	0	
033	4.507.0004	2.25	9	4	SQUEEGEE SUPPORT SPRING		0	0	
034	4.508.0007	11.46	2	2	WHEEL D.100		0	0	
035	4.513.0393	66.13	1	1	BLACK LOWER FAIRING MW		0	0	

8.501.0508

R85010508-1

STRUCTURE

Pos.	Code	Price	Q.ty per	Qty.	Description	Alternative	Price	Q.ty per	Description
036	4.508.0027	4.42	5	1	ACOUSTIC PANEL		0	0	
037	4.508.0030	3.1	7	1	EXHAUST AIR FILTER		0	0	
038	4.508.0009	11.46	2	1	AIR INTAKE PORTION		0	0	
039	4.508.0032	3.79	6	1	AIR INTAKE SEAL		0	0	
040	4.508.0031	2.3	9	1	NON SIMMETRIC RING		0	0	
041	3.755.0010	46	1	1	SUCTION MOTOR 230V/50-60Hz 800W	6.505.0040	56.24	1	KIT SUCTION MOTOR MW 37550085
042	3.200.0092	1.12	18	1	OR 139,37x2,62 NBR SH 70		0	0	
043	4.507.0002	7.12	3	1	SUCTION MOTOR SUPPORT		0	0	
044	4.508.0028	4.68	5	1	UPPER ACOUSTIC PANEL		0	0	
045	4.508.0004	22.92	1	1	PEDAL GREY RAL 7043B		0	0	
047	4.508.0036	3.41	6	2	ADHESIVE GASKET		0	0	
048	4.508.0003	4.93	5	1	TRACTION MOTOR AIR CONVEYOR		0	0	
049	3.099.0277	1.12	18	1	FAN FOR TRACTION MOTOR		0	0	
050	4.505.0002	9.48	3	1	FLANGE FOR MOTOR		0	0	
051	3.001.0032	3.7	6	4	BEARING 6002 2RS1		0	0	
052	6.505.0003	103.11	1	1	KIT 3 STATOR + ROTOR + SHAFT		0	0	
054	4.505.0001	22.49	1	1	MOTOR SUPPORT		0	0	
055	4.506.0004	4.59	5	1	SUPPORT FOR PULLEY		0	0	
056	4.508.0041	1	20	1	BRUSH TRACTOR		0	0	
057	3.004.0007	1.12	18	1	WASHER 6X18 UNI 6593 ZNT		0	0	
058	3.004.0035	1.12	18	1	WASHER GROWER D.6 UNI1751 ZNT		0	0	
059	3.002.0150	1.12	18	1	SCREW M6X35		0	0	
060	4.012.0268	54.08	1	1	MAIN POWER CABLE 3X1,5 MT.10 SCHUKO PLUG		0	0	
063	3.002.0106	1.12	18	15	SCREW TC-TC 3.9X16 UNI 6954ZNT		0	0	
064	3.002.0068	1.12	18	2	SCREW TCEI M6X12 UNI 5931 ZNT		0	0	
065	4.506.0003	5.63	4	4	SCREW M3		0	0	
066	4.506.0002	2.86	8	2	SCREW M6		0	0	
067	3.004.0026	1.12	18	4	WASHER D.4,3X12 UNI 6593 ZNT		0	0	
068	3.002.0028	1.22	17	1	SCREW TC-TC M4X12 UNI 7687 ZNT		0	0	
069	3.004.0003	1.12	18	1	WASHER D.4X8 DIN6798 ZNT		0	0	
070	3.002.0182	1.12	18	3	TCEI SCREW M4X55 UNI ZNT		0	0	
071	3.002.0127	1.12	18	7	SCREW TC CROSS CUT M5X35 SWAGEFORM ZNT		0	0	
072	5.509.1836	80.23	1	1	ASSEMBLY UPPER COVER (RED)		0	0	
075	5.509.0394	50.73	1	1	CARPET BRUSH + BEARING ASSEMBLY		0	0	

8.501.0508

R85010508-1

STRUCTURE

