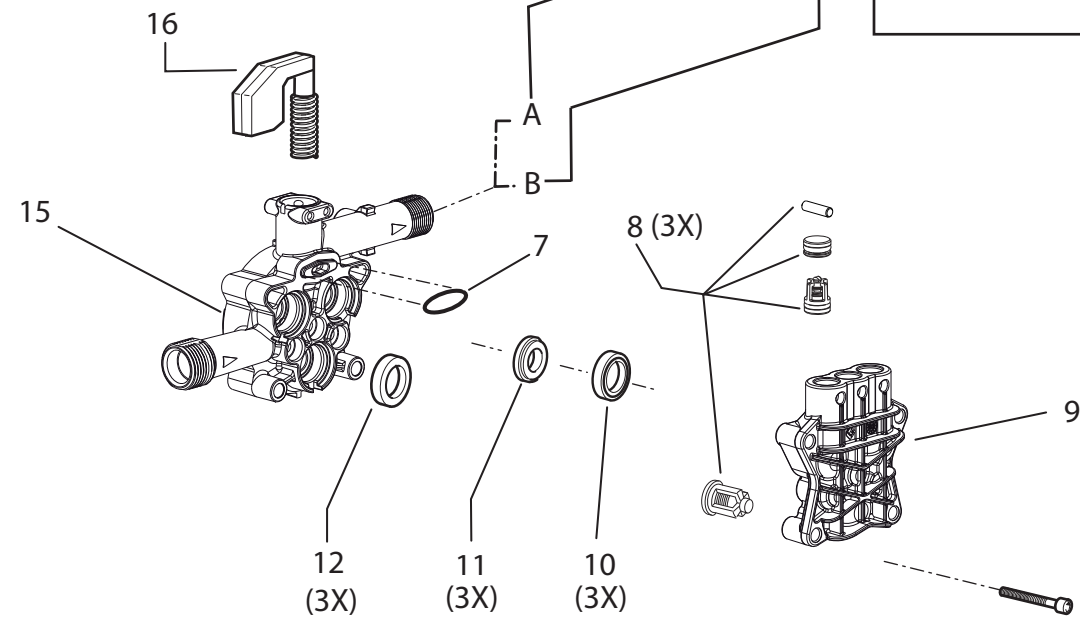
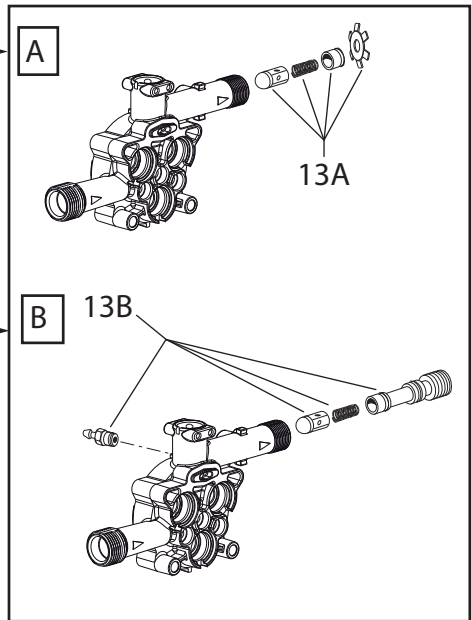
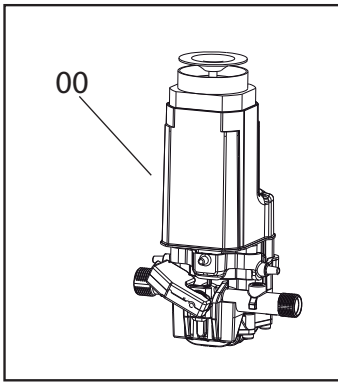
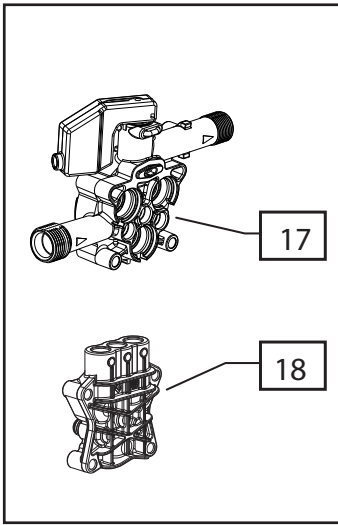
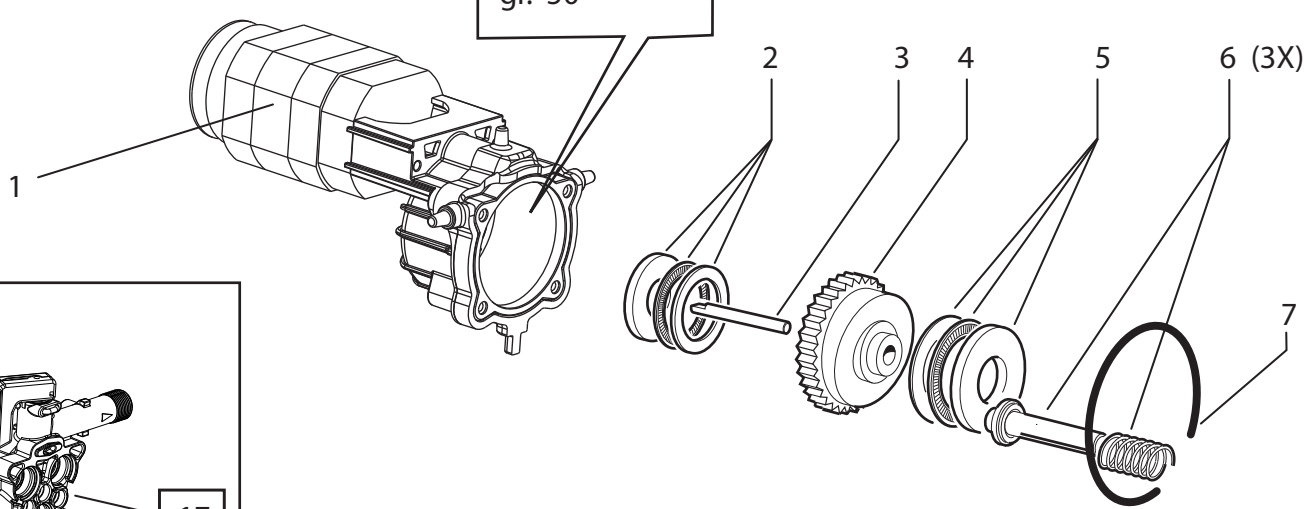


OIL:
SAE 15/W40
gr. 50



Torque couple
8 - 8,5 Nm

LISTA RICAMBI

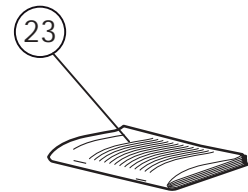
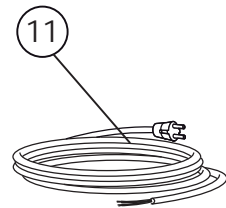
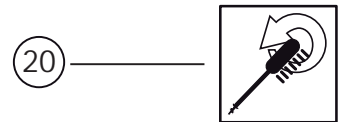
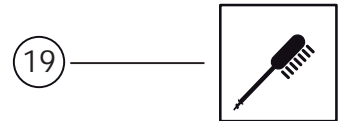
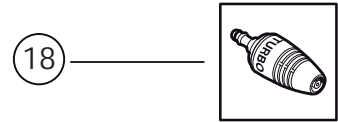
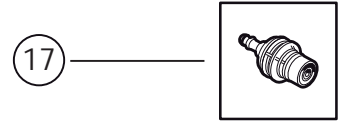
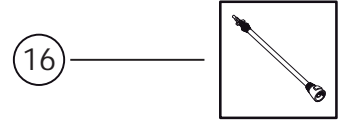
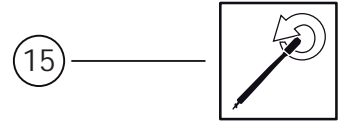
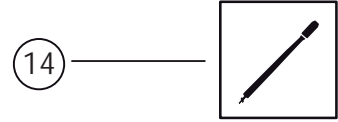
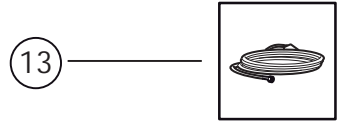
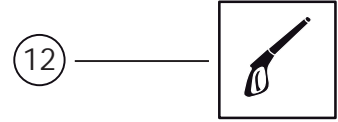
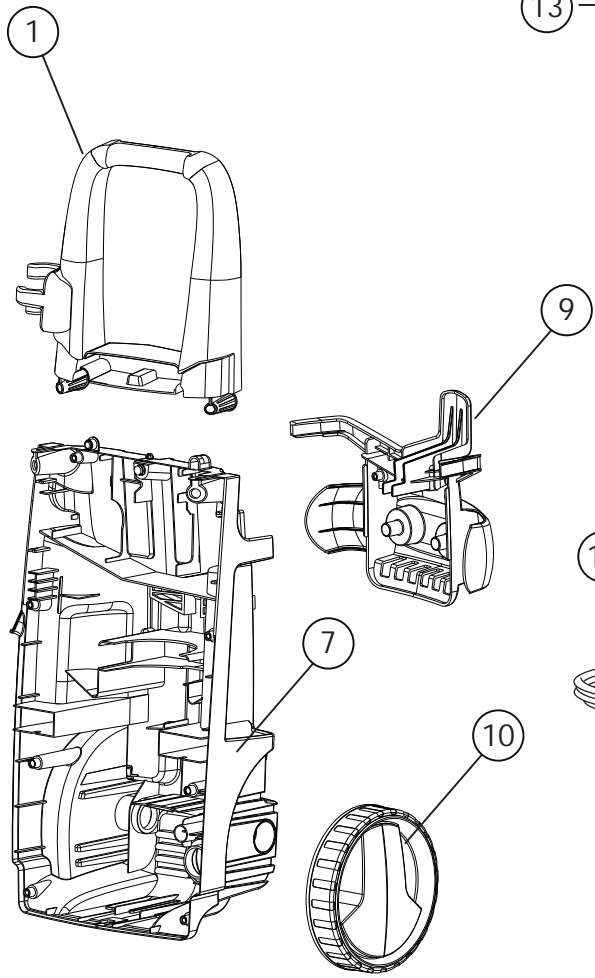
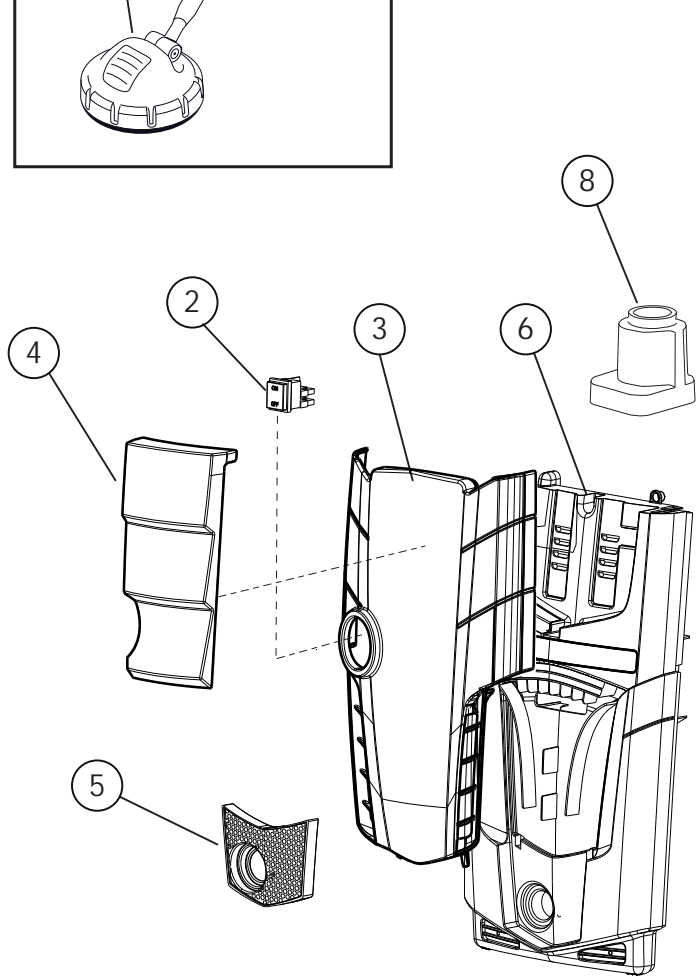
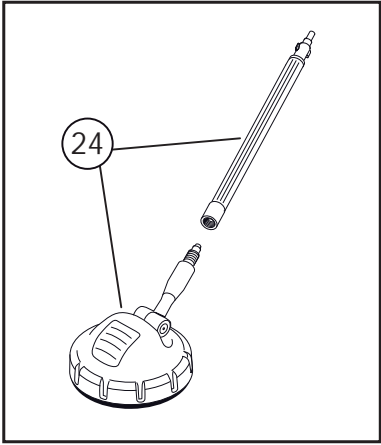
CODICE: 8.086.0075C **REV.:** 1 **DESCRIZIONE:** IDRO GALAXY 150 220-240/50-60 -G/N- TS EU 2L
+SP.ROT. +SP.PAV.L25 LWS

DATA INIZIO VAL.: 04/09/2014 **DATA FINE VAL.:** 01/01/3000

CODICE GRUPPO: R50010714C **REV.:** 2 **DESCRIZIONE:** MOTOP.SPAZZ.PT'03 ECO 230/50 5'30 TS MOLLA 9KG

DATA INIZIO VAL.: 02/28/2013 **DATA FINE VAL.:** 01/01/3000 **N. TAVOLA:** E50010714C/01

CODICE:	DESCRIZIONE:	QTA':	POS:	ORD	EXTR.
5.001.0714C	MOTORPUMP PT'03EVO 230/50 TS 5'30 SPRING 13KG (7645PF-AL)	1	00		
5.009.0822	UNIV.MOTOR 230/50+PINION CABLE L=600 WITH CAPACITOR (7645PF-ALL)	1	01		
6.005.0311	THRUST RING KIT (PT'03 U76)	1	02		X
4.007.0205	PIN 10X70	1	03		X
5.009.0726	5'30 WOBBLE PLATE ASSEMBLY W/CROWN Z 62 (PT'03)	1	04		
4.007.0328	THRUST BEARING 35X55X12 PT'03	1	05		X
6.005.0181	KIT 167 LW PISTON	1	06		X
6.005.0226	KIT 209 O-RING	1	07	X	
6.005.0392	KIT 358 LW HEAD VALVE KIT +CAPS PT'03EVO	1	08		X
4.005.0298	PT'03EVO PARTNER HEAD	1	09		
6.005.0133	KIT 124 O-RING WATER SEAL PARTNER D.12	1	10	X	
6.005.0380	KIT 348 SPACER FOR WATER SEAL	1	11		
6.005.0079	KIT 79 LW OIL SEALS	1	12	X	
6.005.0281	KIT 256 VALVE GUIDE RID. W/O SUCTION PT'03C	1	13A		X
4.005.0299	PISTON BODY GUIDE PT'03EVO	1	15		
5.009.0716	COMPLETED VALVE TS PT'03 CABLE L=530 SPRING 13KG (WHITE FASTON COVER)	1	16		
5.007.0248	BODY GUIDE ASSEMBLED PT'03EVO WITH TS/COMP.VALVE WITHOUT SUCTION S.13KG	1	17		
5.008.0261	PT'03EVO HEAD D.12	1	18		



LISTA RICAMBI

CODICE: 8.086.0075C **REV.:** 1 **DESCRIZIONE:** IDRO GALAXY 150 220-240/50-60 -G/N- TS EU 2L
+SP.ROT. +SP.PAV.L25 LWS

DATA INIZIO VAL.: 04/09/2014 **DATA FINE VAL.:** 01/01/3000

CODICE GRUPPO: R80860075C **REV.:** 1 **DESCRIZIONE:** CHASSIS

DATA INIZIO VAL.: 04/09/2014 **DATA FINE VAL.:** 01/01/3000 **N. TAVOLA:** E8086G150/01

CODICE:	DESCRIZIONE:	QTA':	POS:	ORD	EXTR.
5.011.0183	HANDLE + SILVER GRIP (STM P80.0502)	1	01		
3.401.0178	SWITCH 0/1 BLACK BOTTON IP55 12/10	1	02		X
4.013.0691	YELLOW FRONT CABINET FOR GALAXY (PANT.108C)	1	03		
4.008.1622	GREY FRONTAL COVER FOR GALAXY PANT.877C(metallic) -PAINTED- W/TAMP.LAVOR	1	04		
4.008.1310	GREY INLET COVER PANT.877C (metallic) PAINTED (STORM II PLUS P40.0473)	1	05		
4.013.0556C	BLACK FRONT CABINET FOR STM (P80.0425)	1	06		
4.008.1263	PROCESS BLACK C BACK CABINET STM (FOR UNIVERSAL MOTOR - P80.0502-U)	1	07		
4.008.1172	AIR CONVEYOR FOR U76 -C-	1	08		
4.008.1417	BLACK ACCESSORY HOLDER STORM STEAM B&S	1	09		
4.008.1260	BLACK WHEEL STM/I-CLEAN (P80.0502)	2	10		X
4.012.0174	CABLE H05VV-F 2X1 MT.5,4 F/F SCHUKO PLUG	1	11		
6.001.0073	GUN S'09 WITH INTEGRAL QUICK JOINT LAVOR	1	12		X
4.018.0095	HOSE 1/4 160BAR L=6000 M22x1,5 D.15-RAPID FIX	1	13		X
6.002.0340	LANCE S'12 WITHOUT NOZZLE HEAD WITH QUICK COUPLING/COGETIL	1	16		X
6.002.0341	NOZZLE HEAD LANCE S'12 D.0,9 (PINK) W/QUICK COUPLING (FIXED FAN JET)	1	17		X
6.002.0346	ROTOX NOZZLE HEAD LANCE S'12 D.1,025 WITH QUICK COUPLING	1	18		
3.601.0035	ROTATING HYDRO BRUSH WITH HANDLE	1	20		
6.002.0259	FOAM SPRAYER WITH TRANSPARENT TANK	1	21		
3.100.0082	QUICK COUPLING INLET CONNECTOR	1	22		
7.100.1932	MANUAL GALAXY + CE LAVOR 27L A5 16F	1	23		
3.601.0111	YELLOW/BLACK FLOOR BRUSH L25 WITH EXTENSION (D.1,1)	1	24		