

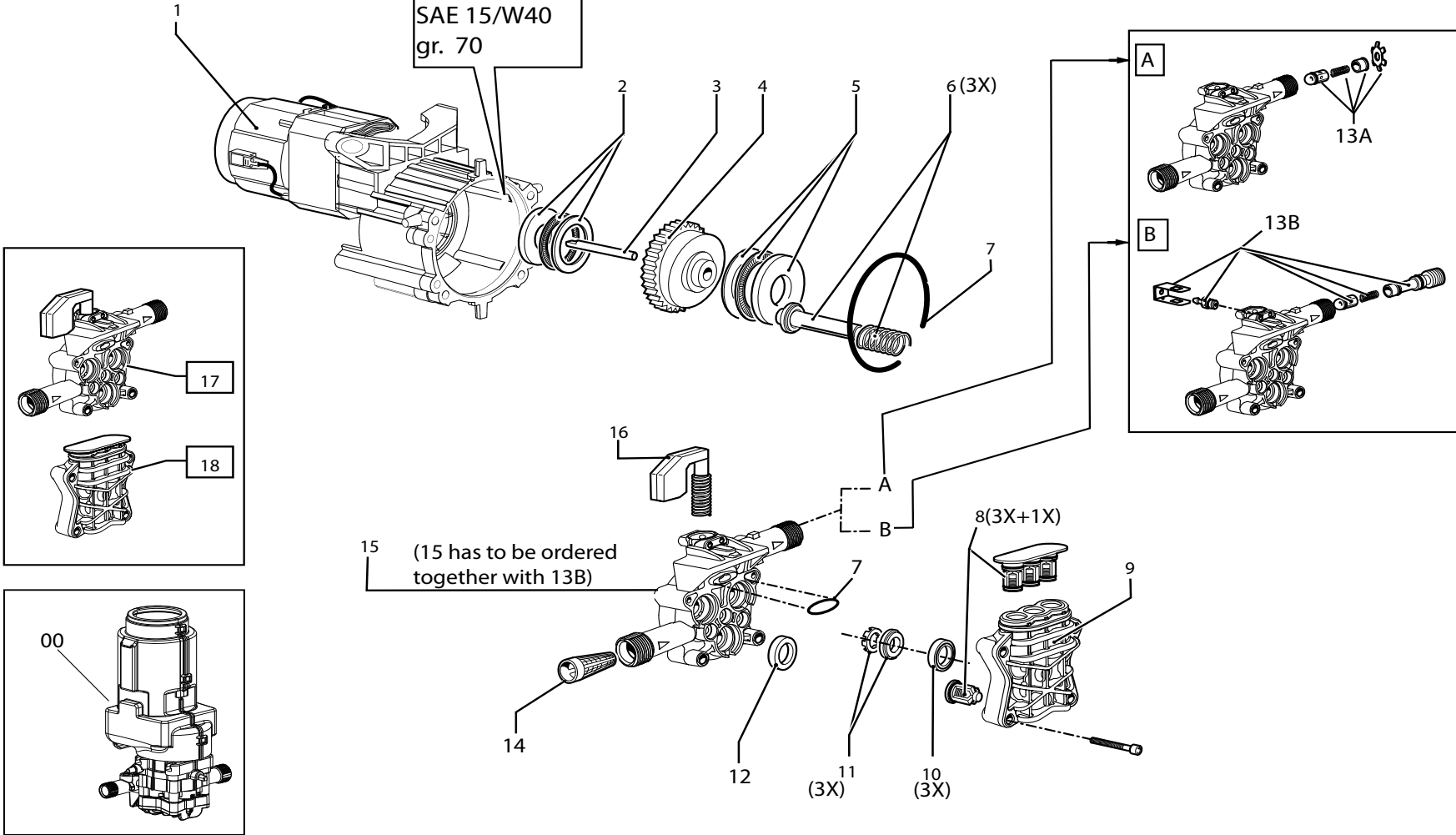
LAVORWASH

SERVICE

Parts

CODE	8.086.0011C
DESCRIPTION	TECHNO 160 230/50-60 -BLUE/BLACK- TS EU 2L +1BRUSH FASA -C-
REVISION	22/9/2011
VALIDITÀ	WEEK 40 2013

OIL:
SAE 15/W40
gr. 70



Pos.	Code	Price	Q.ty per	Qty.	Description	Alternative	Price	Q.ty per	Description
000	5.001.0554C	128.54	1	1	MOTORPUMP PT'03 230/50 COMP.VALVE 7'10 TS	5.001.0733C	0	1	MOTORPUMP PT'03EVO 230/50 COMP.VALVE 7'10 TS
001	5.009.0582	78.03	1	1	BRUSH MOTOR '03 230/50 WITH CAPACITOR (8850)		0	0	
002	6.005.0180	21.42	1	1	KIT 166 FOOTSTEP BEARING 3047PT' 03-SD		0	0	
003	4.007.0205	5.36	4	1	PIN 10X70		0	0	
004	5.009.0657	21.42	1	1	7'30 PLATE ASSEMBLY W/CROWNZ 50		0	0	
005	4.007.0328	10.71	2	1	THRUST BEARING 35X55X12 PT'03REV.03		0	0	
006	6.005.0181	21.42	1	1	KIT 167 LW PISTON		0	0	
007	6.005.0226	21.42	1	1	KIT 209 O-RING		0	0	
008	6.005.0184	10.71	2	1	KIT 170 LW HEAD VALVE KIT		0	0	
009	4.005.0210	21.42	1	1	'03 PARTNER HEAD		0	0	
010	6.005.0133	10.71	2	1	KIT 124 O-RING WATER SEAL PARTNER D.12		0	0	
011	6.005.0282	10.71	2	1	KIT 257 O-RING SEAL		0	0	
012	6.005.0079	11.78	2	1	KIT 79 LW OIL SEALS		0	0	
13A	6.005.0281	10.71	2	1	KIT 256 VALVE GUIDE RID. W/OSUCTION PT'03C		0	0	
13B	6.005.0210	12.28	2	1	KIT 193 LW VALVE GUIDE RID.+PO RTAG.PT'03		0	0	
014	4.008.0031	1.07	20	1	INLET WATER FILTER H2O D.16 CONICAL		0	0	
015	4.005.0234	10.71	2	1	PISTON BODY GUIDE PT03 WITHOUTDETERG.		0	0	
016	5.009.0716	21.42	1	1	COMPLETED VALVE TS PT'03 CABLEL=530 SPRING		0	0	
017	5.007.0192	61.16	1	1	GUIDE BODY PARTNER'03 PISTON D.12		0	0	
018	5.008.0182	20.8	1	1	'03 PARTNER HEAD D.12	5.008.0182C	21.42	1	PUMP HEAD PARTNER '03 D.12

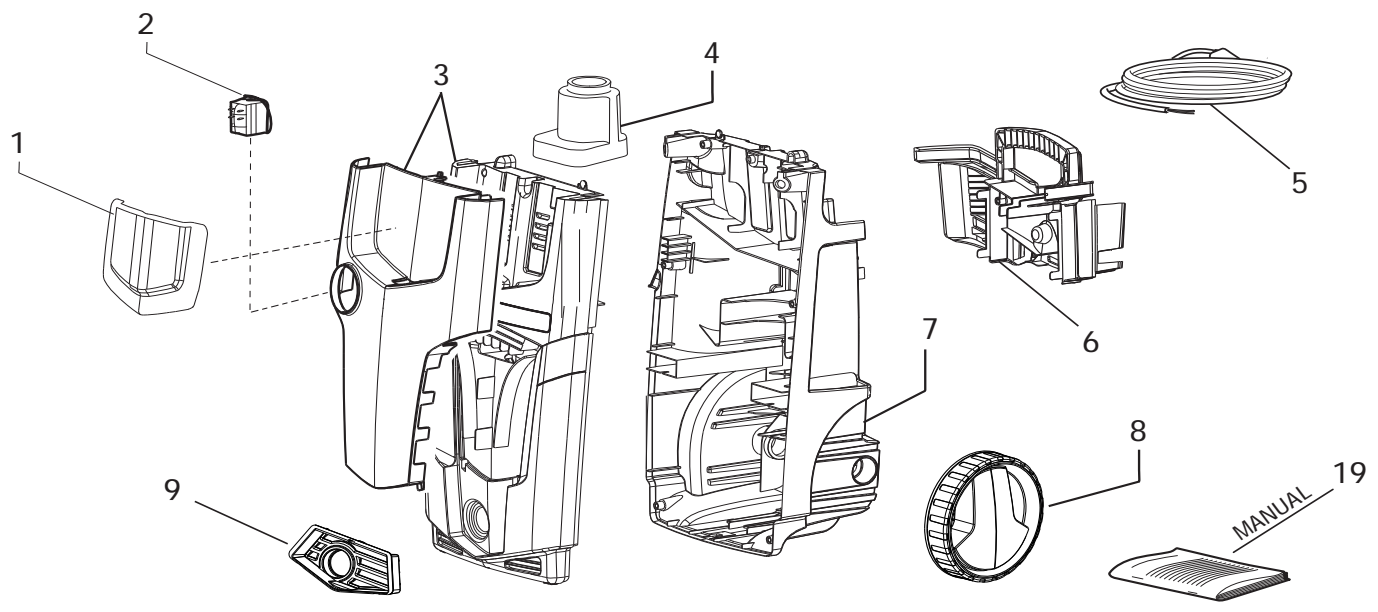
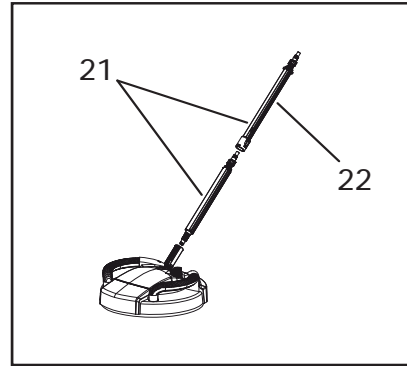
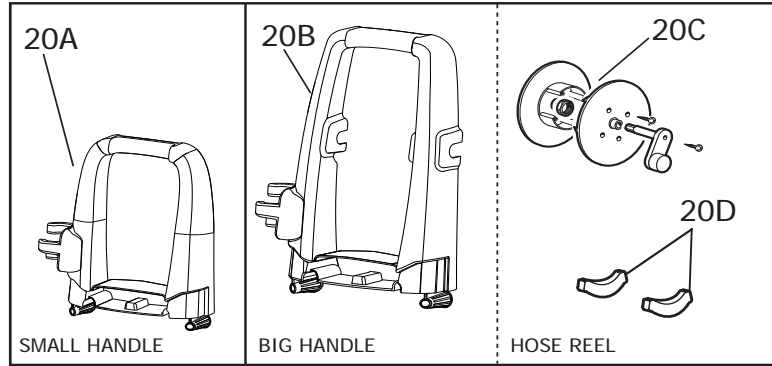
8.086.0011C	R50010554C-2	MOTORPUMP
--------------------	---------------------	------------------

MODELS

(A)

(B)

LAVOR E8086C001/03



- 10
- 11
- 12
- 13
- 14
- 15
- 16
- 17
- 18

Pos.	Code	Price	Q.ty per	Qty.	Description	Alternative	Price	Q.ty per	Description	
001	4.008.1264	16.07	2	1	BLACK FRONTAL COVER FOR UNIVERSAL VERSION		0	0		
002	3.401.0178	10.71	2	1	SWITCH 0/1 BLACK BOTTON IP55 12/10		0	0		
003	5.011.0138	0	1	1	FRONT PLASTIC COVER BLACK+BLUE		0	0		
004	4.008.0721	21.42	1	1	DX MOTOR CONVEYER		0	0		
005	4.012.0235	16.6	2	1	CABLE H05VV-F 2X1,5 length.5,4SCHUKO		0	0		
006	4.008.1259	21.42	1	1	BLACK BACK ACCESSORY HOLDER P80.0502		0	0		
007	4.008.1263	20.6	1	1	PROCESS BLACK C BACK CABINET FOR UNIVERSAL		0	0		
008	4.008.1311	25.75	1	2	PROCESS BLACK C/GREY PANT.877C(metallic)	4.008.1203	9.7	3	WHEEL -GREY- RAL.7016 WITH BLACK TREAD	
009	4.008.1310	1.8	18	1	GREY INLET COVER PANT.877C (metallic) PAINTED		0	0		
010	6.001.0073	25.71	1	1	GUN S'09 WITH INTEGRAL QUICK JOINT LAVOR		0	0		
011	4.018.0096	32.14	1	1	HOSE 1/4 160BAR L=8000 M22x1,5D.15-RAPID FIX		0	0		
012	6.002.0279C	13.4	2	1	FIXED LANCE S'99 0,95 L=46cm.(ORANGE) ESP.00	6.002.0209C	11.78	2	FIXED LANCE S'99 1,05 L=46cm.(GREY) ESP.00	
013	6.002.0329	10.71	2	1	ROTOX LANCE S01 CONICAL HEAD 1,025 (BLACK)		0	0		
014	3.601.0033	12.16	2	1	FIX BRUSH WITH ADAPT.REINFORCED COGETIL		0	0		
015	3.601.0035	34.63	1	1	ROTATING HYDRO BRUSH WITH HANDLE	3.601.0074	22.67	1	BLACK/YELLOW ROTATING BRUSH	
016	6.002.0259	10.71	2	1	FOAM SPRAYER WITH TRANSPARENTTANK		0	0		
017	3.100.0082	1.07	20	1	QUICK COUPLING INLET CONNECTOR		0	0		
018	6.003.0078	7.5	4	1	LWS-AR ADAPTOR		0	0		
019	7.100.1659	0	1	1	MANUAL STORM III + CE LAVOR 27L A5 16F		0	0		
20B	5.011.0137	20	1	1	HANDLE FOR HOSE REEL + BLUE GRIP PANT.3005U		0	0		
20C	6.005.0353	21.42	1	1	HOSE REEL KIT STM		0	0		
20D	5.012.0336	2.68	9	1	HANDLE BRACKET		0	0		
021	3.601.0102	53.56	1	1	YELLOW/BLACK FLOOR BRUSH WITHEXTENSION		0	0		
022	6.003.0080	10.3	2	1	EXTENSION FLOOR BRUSH -C-		0	0		
8.086.0011C		R80860011C-2			CHASSIS					

