

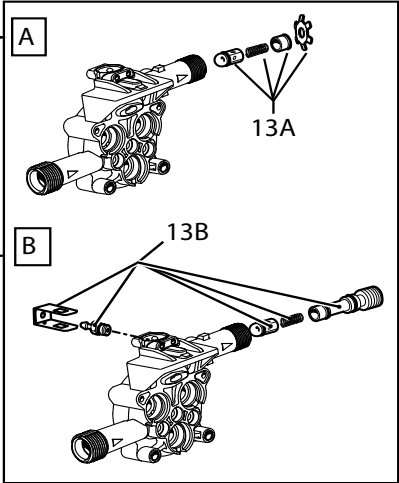
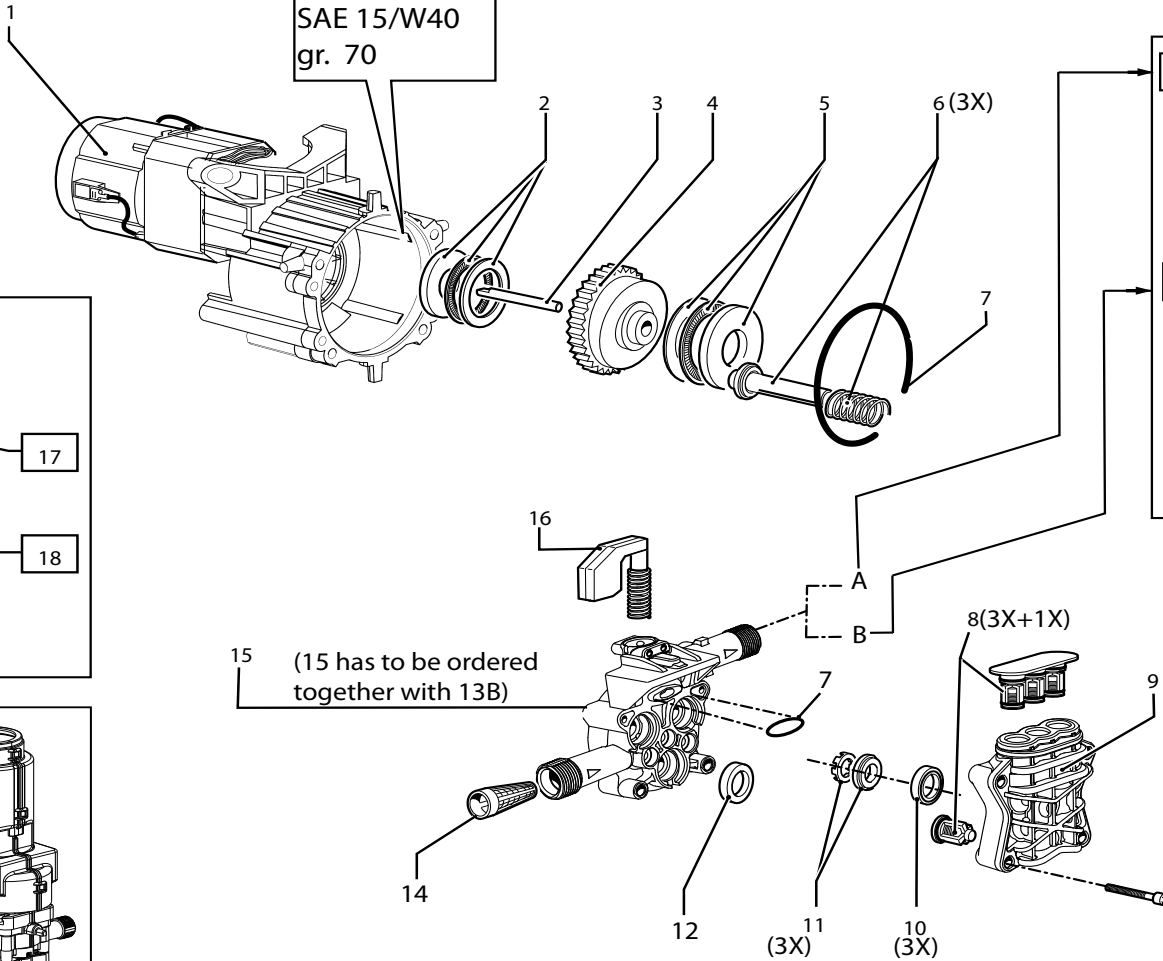
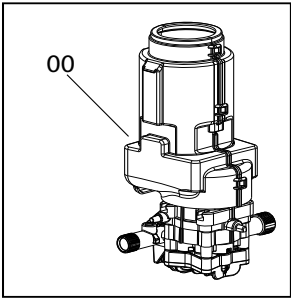
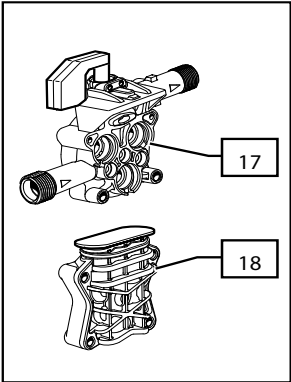
LAVORWASH

SERVICE

Parts

CODE	8.086.0002C
DESCRIPTION	HPC STM 150 220-240/50-60 -Y/B- TS EU 2L+2BRUSHES + FL.BRUSH
REVISION	22/6/2010
VALIDITÀ	WEEK 27 2013

OIL:
SAE 15/W40
gr. 70

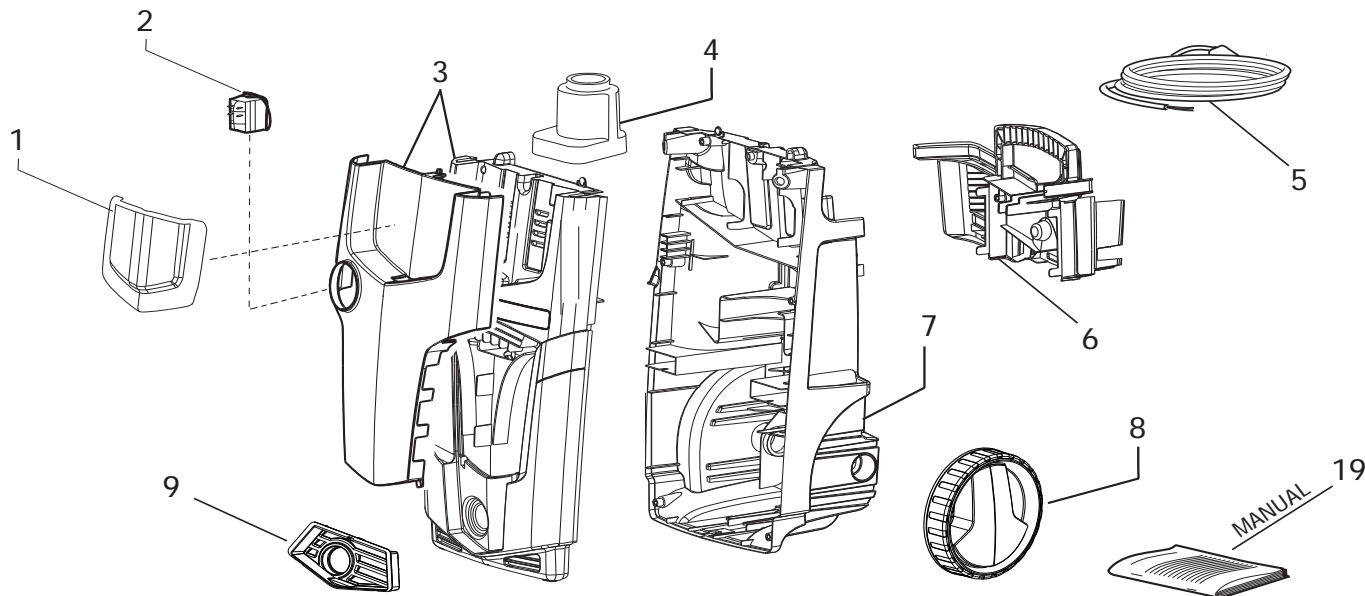
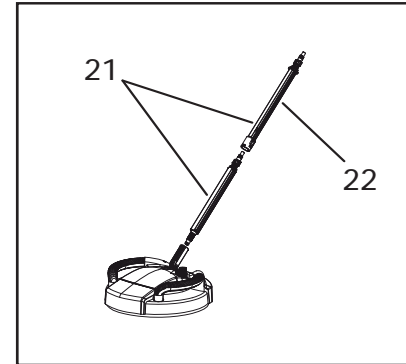
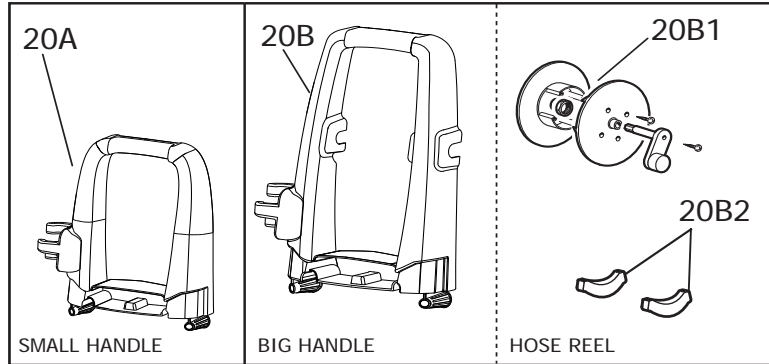


MODELS

(A)

(B)

LAVOR E8086C001/02



- 10 —
- 11 —
- 12 —
- 13 —
- 14 —
- 15 —
- 16 —
- 17 —
- 18 —

