

ORDINARY MAINTENANCE	20%
EXTRAORDINARY MAINTENANCE	10%

LISTA RICAMBI

CODICE: 8.072.0632C REV.: 1 DESCRIZIONE: IDRO SKIPPER JUNIOR 130 230/50-60 -G- TS EU
2L+2SPAZZ. LWS -C-

DATA INIZIO VAL.: 06/11/2010 DATA FINE VAL.: 01/01/3000

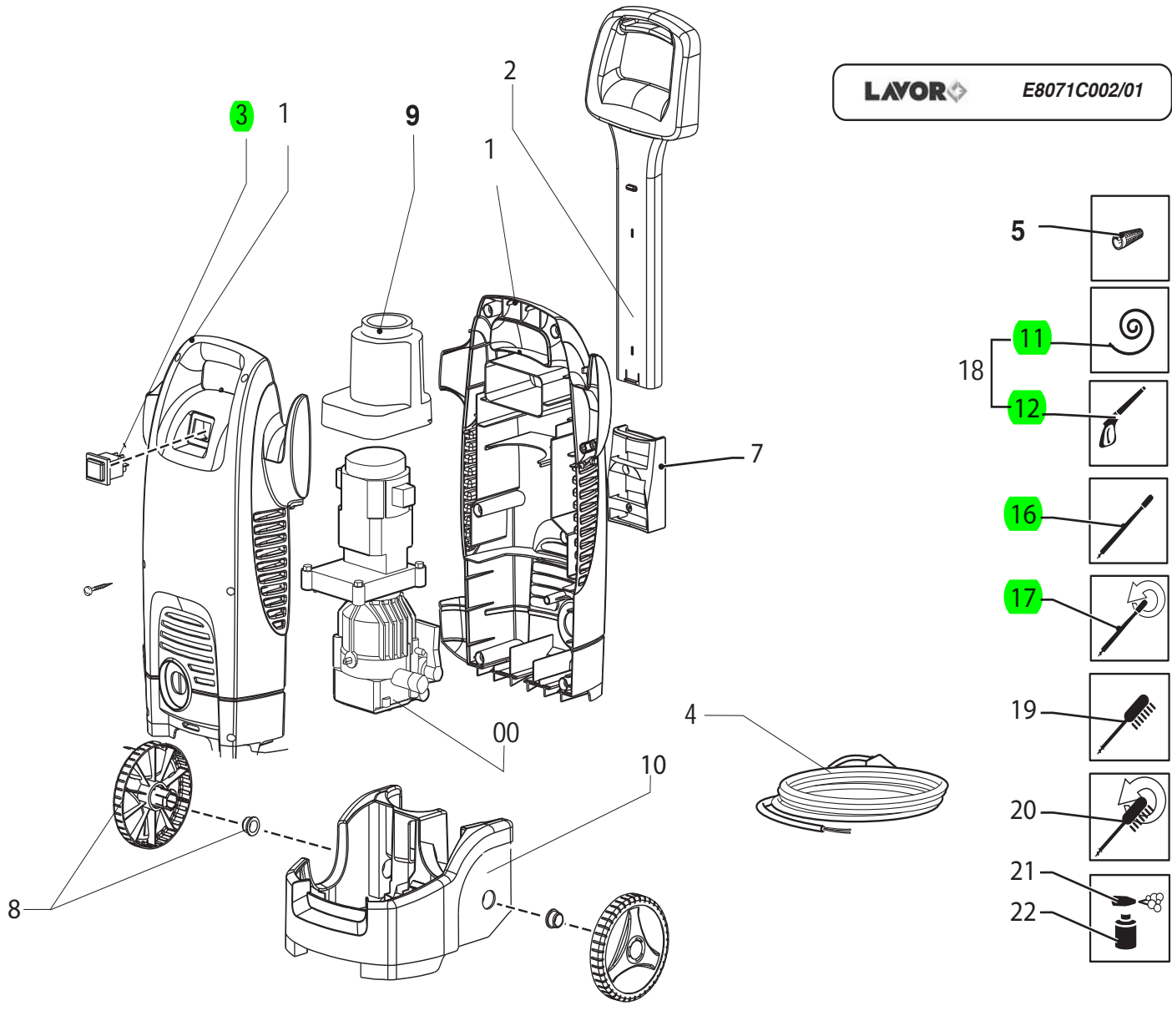
CODICE GRUPPO: R5001Z644C REV.: 1 DESCRIZIONE: MOTORPUMP

DATA INIZIO VAL.: 03/12/2010 DATA FINE VAL.: 01/01/3000 N. TAVOLA: E50010014/06

CODICE:	DESCRIZIONE:	QTA':	POS:	RIF1:	RIF2:
5.001.Z644C	MOTORPUMP PT'03 230/50 TS 5'30 SPRING 9KG (7645PF)	1	00		
5.009.0741	UNIV.MOTOR 230/50+PINION CABLE L=600 WITH CAPACITOR (7645PF)	1	01		
6.005.0311	THRUST RING KIT	1	02		
4.007.0205	PIN 10X70	1	03		
5.009.0726	5'30 PLATE ASSEMBLY W/CROWN Z 62	1	04		
4.007.0328	THRUST BEARING 35X55X12 PT'03 REV.03	1	05		
6.005.0181	KIT 167 LW PISTON	1	06		
6.005.0226	KIT 209 O-RING	1	07		
6.005.0184	KIT 170 LW HEAD VALVE KIT	1	08		
4.005.0210	'03 PARTNER HEAD REV.11	1	09		
6.005.0133	KIT 124 O-RING WATER SEAL PARTNER D.12	1	10		
6.005.0134	KIT 125 O-RING SEAL	1	11		
4.008.0031	INLET WATER FILTER H2O D.16 CONICAL	1	14		
5.009.0676	ASSEMBLY BODY GUIDE WITHOUT SUCTION	1	15		
5.009.0680	COMPENSATED VALVE WITH TS X PT '03 CABLE L=530 SPRING 9 KG	1	16		
5.007.0192	GUIDE BODY PARTNER'03 PISTON D.12 W/TS-WOUT/VACUUM-COMP.VAL	1	17		
5.008.0182	'03 PARTNER HEAD D.12	1	18		

■ ORDINARY MAINTENANCE 20%

■ EXTRAORDINARY MAINTENANCE 10%



- ORDINARY MAINTENANCE 20%
- EXTRAORDINARY MAINTENANCE 10%

LISTA RICAMBI

CODICE: 8.072.0632C REV.: 1 DESCRIZIONE: IDRO SKIPPER JUNIOR 130 230/50-60 -G- TS EU
2L+2SPAZZ. LWS -C-

DATA INIZIO VAL.: 06/11/2010 DATA FINE VAL.: 01/01/3000

CODICE GRUPPO: R80720632C REV.: 1 DESCRIZIONE: CHASSIS

DATA INIZIO VAL.: 06/11/2010 DATA FINE VAL.: 01/01/3000 N. TAVOLA: E8071C002/01

CODICE:	DESCRIZIONE:	QTA':	POS:	RIF1:	RIF2:
5.001.Z644C	MOTORPUMP PT'03 230/50 TS 5'30 SPRING 9KG (7645PF)	1	00		
4.013.0543	RIGHT+LEFT PLASTIC COVER POWER 19 YELLOW RAL.1018	1	01		
4.008.1119	POWER FIXED HANDLE BLACK COLOUR	1	02		
5.009.0213	SWITCH WITH PROTECTION 16(8) 12(10)	1	03		
4.012.0174	CABLE H05VV-F 2X1 MT.5,4 F/F SCHUKO PLUG REV.03	1	04		
4.008.0031	INLET WATER FILTER H2O D.16 CONICAL	1	05		
6.005.0241	WHEELS KIT	2	08		
4.008.1172	AIR CONVEYOR FOR U76 -C- REV.03	1	09		
4.008.1002	BASE FOR TROLLEY POWER	1	10		
4.018.0094	HOSE 1/4 130BAR L=4000 M22x1,5 D.15-RAPID FIX WITH SPIRAL SLEEVE REV.02	1	11		
6.001.0073	GUN S'09 WITH INTEGRAL QUICK JOINT LAVOR	1	12		
6.002.0262	LANCE S'02 V 0.95 (ORANGE DOT)	1	16		
6.002.0329	ROTOX LANCE S01 CONICAL HEAD 1,025 (BLACK) L=470 REV.00	1	17		
3.601.0033	FIX BRUSH WITH ADAPT.REINFORCED COGETIL	1	19		
3.601.0035	ROTATING HYDRO BRUSH WITH HANDLE	1	20		
5.011.0070	FOAM SPRAYER 03	1	21		
4.008.0803	TANK FOR FOAM SPRAYER '99 -WHITE TRANSPARENT-	1	22		

■ ORDINARY MAINTENANCE 20%

■ EXTRAORDINARY MAINTENANCE 10%