

LAVORWASH

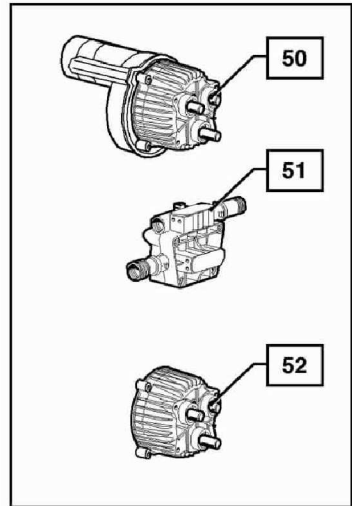
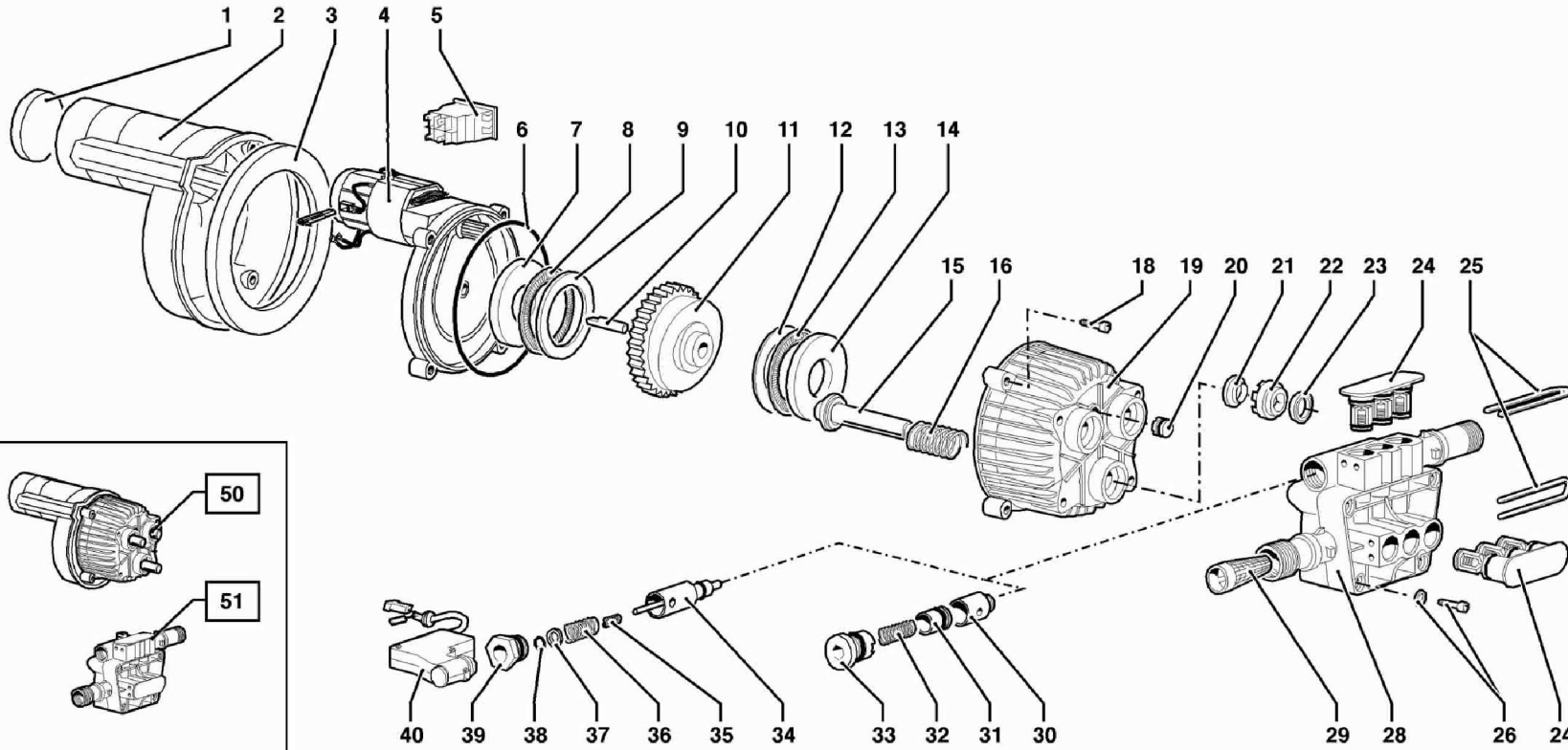
SERVICE

Parts

CODE	8.034.0014
DESCRIPTION	SD 230/50 -G- TS LWS [GERMANIA] +ROTOX +SPAZZ.FISSA
REVISION	20/9/2002
VALIDITÀ	WEEK 16 2013

Exploded drawing cod. E50010007/02

by LAVORWASH



Pos.	Code	Price	Q.ty per	Qty.	Description	Alternative	Price	Q.ty per	Description
000	5.001.0307	0	1	1	MOTORPUMP BRUSH MOTOR SD230/50TS WITH	5.001.0437	148.16	1	MOTOP.MOTORE SPAZZ. EKO 230/50TS TEST.TAPPI
001	4.008.0552	3.79	7	1	ROUND GASKET		0	0	
002	4.008.0653	7.22	4	1	CONVEYOR SD *UL* BLACK		0	0	
003	4.008.0553	5.56	5	1	SPONG GASKET		0	0	
004	5.009.0354	123.07	1	1	UNIVERSAL MOTOR FOR SD 230/50/INTEG.FLANCE +	5.009.0476	129.54	1	BRUSH MOTOR ASSY SD 230/50 WITH
005	5.009.0213	10.71	2	1	SWITCH WITH PROTECTION 12(10)		0	0	
006	4.008.0614	1.07	20	1	OR GASKET		0	0	
007	4.007.0206	21.42	1	1	THRUST SHOE FOR AXIAL BEARING		0	0	
008	3.001.0027	1.82	20	1	ROLLER-CAGE AXK 3047		0	0	
009	3.001.0028	1.07	20	1	THRUST RING AS3047 AXIAL BEARING		0	0	
010	4.007.0205	5.36	4	1	PIN 10X70		0	0	
011	5.009.0350	21.42	1	1	PLATE ASSY		0	0	
012	3.001.0023	1.07	20	1	THRUST RING AS3552		0	0	
013	3.001.0024	2.14	10	1	ROLLER-CAGE AXK 3552		0	0	
014	4.007.0138	7.23	3	1	THRUST SHOE		0	0	
015	5.009.0282	8.52	3	3	PISTON/HOLDING PISTON ASSEMBLYDIAM.12		0	0	
016	4.007.0162	1.07	20	3	PISTON SPRING LAVOR 12 IN C98ESP.07		0	0	
018	4.007.0247	3.54	7	4	SCREW TCEI 6X28.5		0	0	
019	4.005.0195	21.42	1	1	GUIDE BODY SD X OR RING RADIAL(ALL.)ESP.02		0	0	
020	5.009.0207	10.71	2	1	CAP ASSY		0	0	
021	3.201.0014	3.89	6	3	OIL SEAL RING D.12X20X5/7		0	0	
022	4.008.0745	1.07	20	3	PISTON'S RING D.12		0	0	
023	3.201.0020	2.41	9	3	WATER SEAL 12X18X5		0	0	
024	5.009.0475	10.71	2	2	FLAT VALVE ASSY ED-SD		0	0	
025	4.007.0163	1.07	20	2	VALVE BODY HOLDING PIN LAVOR 12 ESP.02		0	0	
026	4.007.0229	1.07	20	4	HEXAGON SOCKET HEAD CAP SCREWWITH COLLAR		0	0	
028	4.008.0747	29.96	1	1	HEAD ED'99 FLAT VALVE ESP.00	5.008.0186	48.31	1	FIBER HEAD SD-EKO ISS WELDED CAPS
029	4.008.0031	1.07	20	1	INLET WATER FILTER H2O D.16 CONICAL		0	0	
034	5.009.0383	11.01	2	1	VALVE ASSY D.1,9 PER TS OR 5,28X1,78 (SD)		0	0	
035	4.007.0151	1.07	20	1	TS SPRING		0	0	
036	4.007.0146	2.67	10	1	VALVE		0	0	
037	4.008.0467	5.1	5	1	ASS SPRING HOLDER		0	0	
038	3.200.0073	1.07	20	1	OR GASKET		0	0	
039	5.009.0254	7.23	3	1	CAP+OR TOTAL STOP VALVE ASSY		0	0	

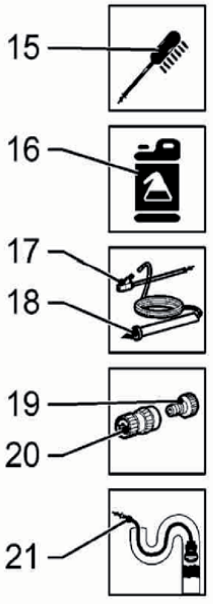
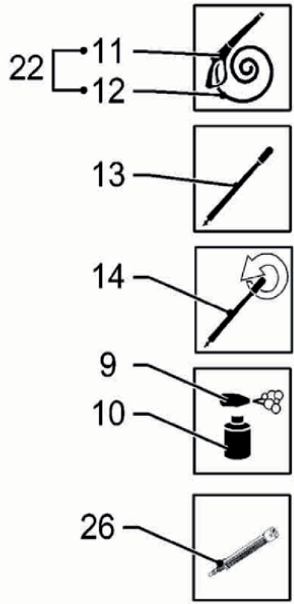
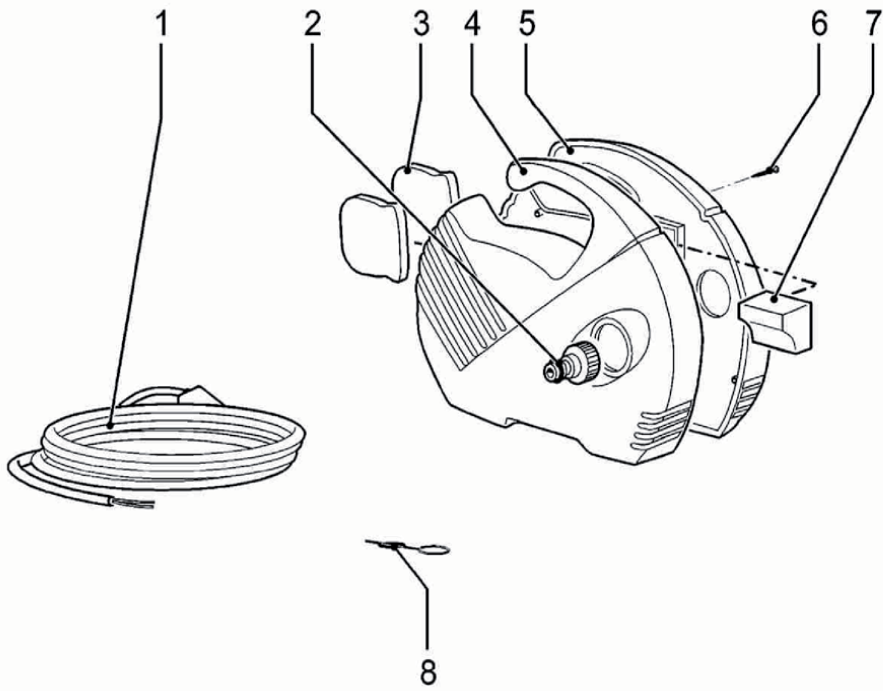
8.034.0014

R50010307-2

MOTOP.MOTORE SPAZZOLA SD 230/50 TS CON FLANGIA INTEGRALE

Exploded drawing cod. E8034C005/01

by LAVORWASH



Pos.	Code	Price	Q.ty per	Qty.	Description	Alternative	Price	Q.ty per	Description
001	4.012.0156	7.68	4	1	CABLE H05VV-F 2X0,75 MT.5,4 F/F SCHUKO PLUG		0	0	
002	3.100.0082	1.07	20	1	QUICK COUPLING INLET CONNECTOR		0	0	
004	4.013.0287	21.42	1	1	SD INLET HOUSING		0	0	
005	4.013.0288	21.42	1	1	SD OUTLET HOUSING		0	0	
006	3.002.0112	1.07	20	7	CROSS HEAD -TORX SCREW 3,9x25HI-LO ZNT		0	0	
007	4.008.0546	3.13	8	1	SD ELECTRIC BOX COVER		0	0	
008	4.007.0114	1.04	20	1	NOZZLE CLEANING PIN	4.007.0449	0	20	NOZZLE CLEANING PIN
009	5.011.0055	0	1	1	FOAM SPRAYER	5.011.0070	4.75	5	FOAM SPRAYER
010	4.008.0529	3.9	6	1	YELLOW FOAM SPRAYER BOTTLE	4.008.0803	4.02	6	TANK FOR FOAM SPRAYER -WHITE TRANSPARENT-
013	6.002.0210	14.16	2	1	FIX LANCE S'99 1,10 (GREEN) ESP.00	6.002.0210C	21.42	1	S'99 FIXED LANCE D.1,10 (GREEN) L=46cm
014	6.002.0219	27.08	1	1	ROTOX LANCE S99 1.10 GREEN	6.002.0230	20.8	1	ROTOX LANCE S01 1,10 (GREEN) ESP.01
015	3.601.0033	12.16	2	1	FIX BRUSH WITH ADAPT.REINFORCED COGETIL		0	0	
022	6.001.0043	74.83	1	1	GUN S'98 WITH EXTENTION WITH 5MT HOSE		0	0	

8.034.0014	R80340014-1	SD 230/50 -G- TS LWS +ROTOX +SPAZZ.FISSA (GERMANIA)
-------------------	--------------------	--

