

ERSATZTEILLISTE

Code R80300901-1
 Beschreibung CHASSIS

Anfangsdatum 16/10/2007
 Schlussdatum 1/1/3000
 Tafel E8030C006-01

Pos.	Code	Preis	Menge pro	Menge.	Beschreibung	Alternative	Preis	M
002	4.008.0280	20	1	1	LANZEN-TRAEGER		0	0
003	4.008.0494	20	1	1	GRIFF		0	0
004	7.101.2477	0	1	2	ADES.CARENATURA EAGLE LAVOR		0	0
005	4.008.0281	20	1	1	REGULIERUNG-GRIFF		0	0
006	5.009.0213	10	2	1	SCHALTER IHRE ART.414096001		0	0
008	4.012.0150	20	1	1	CAVO H05VV-F 3X1,5 MT.5,4 SP.SCHUKO ANTISPRUZZO F/F ESP.04		0	0
009	4.008.0967	3.64	7	1	PORTA LANCIA INFERIORE MACH ESP.01		0	0
010	4.008.0278	20	1	2	DECKEL		0	0
012	4.013.0300	20	1	1	GEHAEUSE		0	0
017	6.005.0242	24.62	1	1	KIT 225 LW RUOTE+FERMO+COPRIRUOTA EAGLE		0	0
019	4.007.0224	20	1	1	RAD ACHSE		0	0
020	4.007.0287	20	1	1	FASCIA FISSAGGIO MOTOP. D.125SCARICATA ESP.02		0	0
021	4.008.0514	20	1	1	FUSS		0	0
022	5.611.0089	75.76	1	1	ASS.CARENAT.INF.NERA EAGLE +GOMMINO +TAPPO C/FORI X		0	0
023	5.012.0290	20	1	1	CORREDO VITI+COMPON. X AVV.+ATTACCO RAPIDO X EAGLE		0	0
025	4.008.0517	10	2	1	SEMIAVV.LATO MANOVELLA ESP.03		0	0
026	3.099.0158	20	1	1	GHIERA FOLLE 3/8 CH20 RIF.E4890003		0	0
027	4.008.0516	8.61	3	1	SEMIAVV.LATO INGRESSO ESP.01		0	0
028	5.609.0073	33.68	1	1	ASSIEME PERNO X AVVOLGITUBO ATT.M14x1,5		0	0
034	4.018.0046	20	1	1	TUBO1/4 210bar L=600 GIR.D.15-M14 ESP.05		0	0

ERSATZTEILLISTE

Code R80300901-1

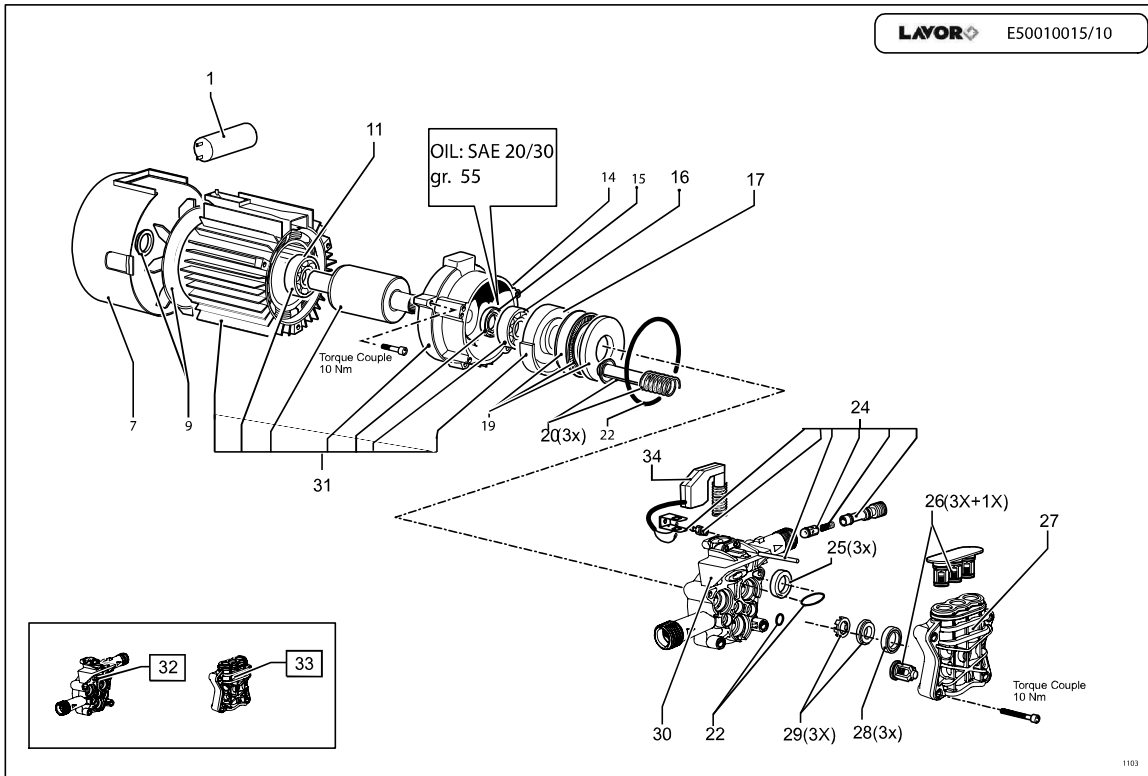
Anfangsdatum 16/10/2007

Beschreibung CHASSIS

Schlussdatum 1/1/3000

Tafel E8030C006-01

Pos.	Code	Preis	Menge pro	Menge	Beschreibung	Alternative	Preis	M
039	4.018.0052	30	1	1	TUBO 1/4 160BAR L=8000 1/4F.GIR.3/8 F.GIR. ESP.04		0	0
040	6.001.0065	36.57	1	1	PISTOLA S'01DM PROL.METALLO C/MANOMETRO C/ATT.RAP.VER.'03	6.001.0077	36.57	1
041	6.002.Z304	20	1	1	LANCIA PRESS.REGOL.MANOP.NERASY'03R D.1.15 -G- (STRETTO)		0	0
042	6.002.0223	35.02	1	1	LANCIA ROTOX S97 1,20 (ROSSO)OTTONE		0	0
043	7.100.1468	22.5	1	1	MANUALE GENERALE IDRO HOBBY 27L A5 128F REV.04		0	0
046	4.008.0622	20	1	1	COPERCHIO SUPERIORE PER CARENATURA EAGLE NERO(2600W)		0	0



LAVORWASH
SERVICE

ERSATZTEILLISTE

Code R50010590-2
Beschreibung MOTORPUMP

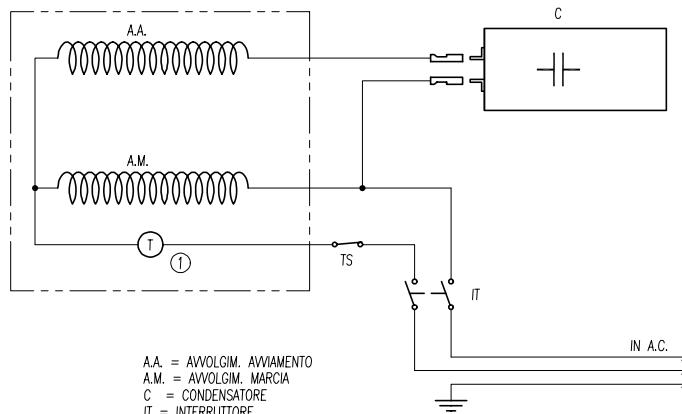
Anfangsdatum 16/10/2007
Schlussdatum 1/1/3000
Tafel E50010015-10

Pos.	Code	Preis	Menge pro	Menge e.	Beschreibung	Alternative	Preis	M
001	3.404.0016	20	1	1	CONDENSATORE 45 mF 450V D.45x93 S/CAVETTI FASTON M ESP.02		0	0
007	4.008.0922	2.54	10	1	COPRIVENTOLA X MOTORE '96 S/GRIGLIA S/FINESTRE ESP.00		0	0
009	6.005.0251	20	1	1	KIT 234 LW VENTOLA+ANELLO		0	0
011	3.001.0020	10	2	1	RADIAL KUGELLAGER 6203 2RS		0	0
014	5.X09.0587	20	1	1	FLANGIA ANTERIORE X PT'03 D.125 PACCO H100 C/FILETTI		0	0
015	3.201.0008	4.96	6	1	SIMMERINGE		0	0
016	3.001.0031	20	1	1	RADIAL KUGELLAGER		0	0
017	4.005.0225	2.53	10	1	PIATTELLO 12 GR PER PT'03 CUSCIN.REGGISPINTA SFERE ESP.01		0	0
019	4.007.0328	20	1	1	CUSCINETTO REGGISPINTA A SFERE35X55X12 PER PT'03 ESP.03		0	0
020	6.005.0181	20	1	3	KIT 167 LW 3 PISTONI +MOLLE PT'03		0	0
022	6.005.0226	20	1	1	KIT 209 O-RING PER PT'03		0	0
024	6.005.0183	11.33	2	1	KIT 169 LW INIETTORE 1,7 +PORTAG.+VALV.RITEGNO PT'03		0	0
025	6.005.0079	11	2	3	KIT 79 LW ANELLI TENUTA OLIOX PARTNER D.12/FIBRA		0	0
026	6.005.0184	10	2	1	KIT 170 LW VALV.ASP./MAND.PT'03		0	0
027	4.005.0210	20	1	1	ZYLINDERKOPF PARTNER'03 LAV. ESP.02 1 16		0	0
028	6.005.0133	10	2	1	KIT 124 ANELLI TENUTA ACQUA PARTNER D.12		0	0
029	6.005.0134	10	2	1	KIT 125 LW ANELLI APP.TENUTAOTTONE + DISTANZIALI PT D.12		0	0
030	4.005.0223	20.56	1	1	CORPO GUIDA PISTONI PT'03 C/FORO ASP.DET.(X EAGLE) ESP.03		0	0
031	5.009.0624	115	1	1	ASS.MOTORE99 D125H100 230/50 2P C/TER. CUS.RIG.PT03+PIATT.SF	5.009.0624C	186.62	1
032	5.007.0216	27.04	1	1	CORPO GUIDA PT'03 D.12 C/TS-ASP.-V.COMP.-C/FORO-MOLLA 17Kg		0	0

Code R50010590-2
Beschreibung MOTORPUMP

Anfangsdatum 16/10/2007
Schlussdatum 1/1/3000
Tafel E50010015-10

Pos.	Code	Preis	Menge pro	Menge	Beschreibung	Alternative	Preis	M
033	5.008.0182	20	1	1	ZYLINDERKOPF PARTNER '03 D.121 30		0	0
034	5.Y09.0596	14.42	2	1	ASSIEME VALVOLA COMPENSATA TSPT'03 CAVO L=510 (MOLLA		0	0



A.A. = AVVOLGIM. AVVIAMENTO
 A.M. = AVVOLGIM. MARCIA
 C = CONDENSATORE
 IT = INTERRUTTORE
 TS = CONTATTO A.S.S.
 T = TERMICO

A.A. = SECONDARY WINDING
 A.M. = PRIMARY WINDING
 C = CAPACITOR
 IT = MAIN SWITCH
 TS = A.S.S. MICROSWITCH
 T = THERMIC SWITCH

LAVORWASH
SERVICE

ERSATZTEILLISTE

Code R8030SE02-1
 Beschreibung WIRING DIAGRAM

Anfangsdatum 16/10/2007
 Schlussdatum 1/1/3000
 Tafel E8000SE02-01