

LAVORWASH

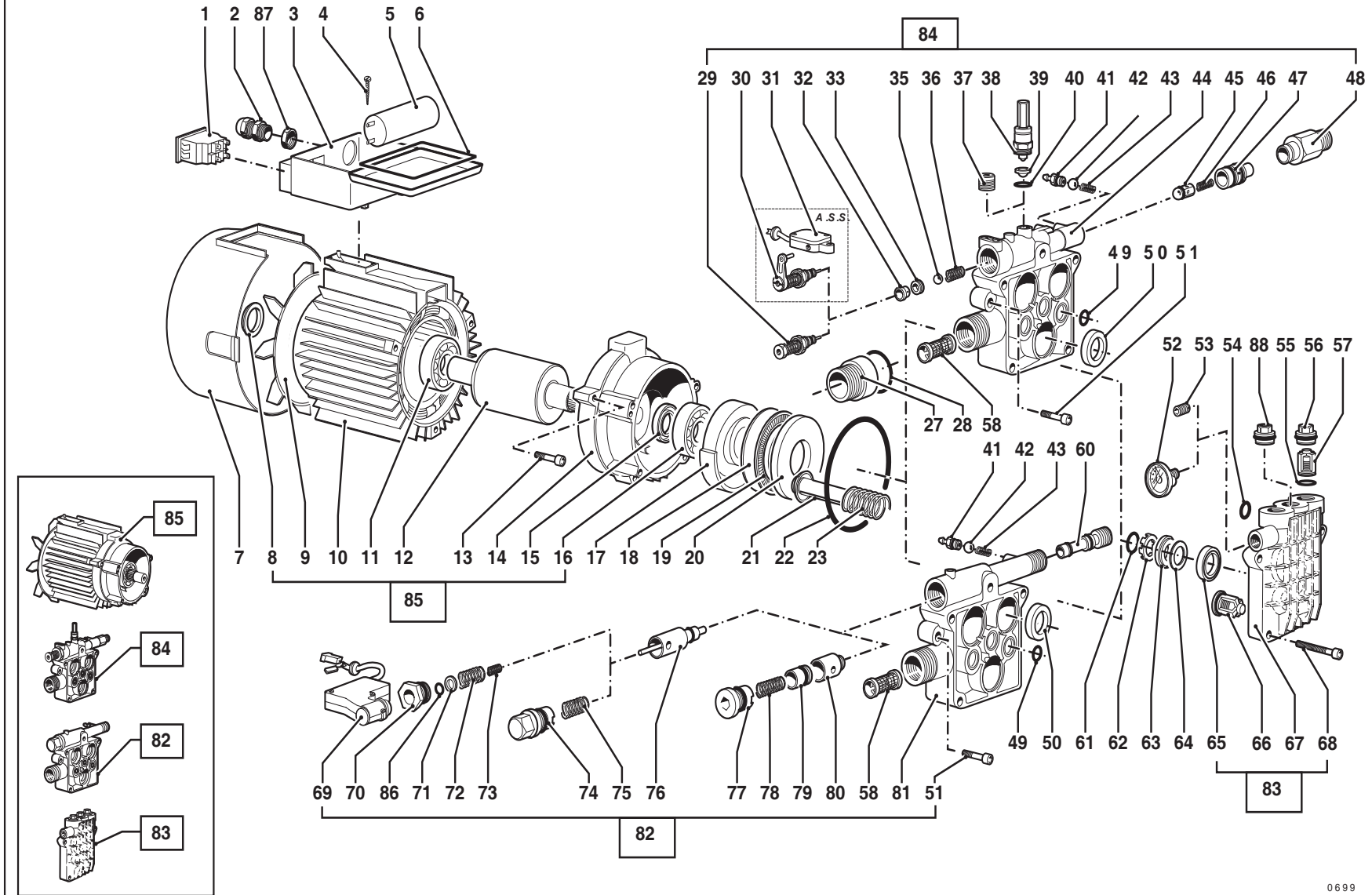
SERVICE

Parts

CODE	8.026.0012
DESCRIPTION	IDRO EQ18 230/50 -V- LWS TS
REVISION	18/7/2002
VALIDITÀ	WEEK 26 2014

Exploded drawing cod. E50010001/02

by LAVORWA SH



Pos.	Code	Price	Q.ty per	Qty.	Description	Alternative	Price	Q.ty per	Description
000	5.001.0184	0	1	1	MOTOPOMPA PARTNER'96 230/50 D.125x80 S/M T.S.	5.001.0299	0	1	MOTOPOMPA PARTNER'99 230/50 D.110x90 S/M T.S.
001	5.009.0213	10.71	2	1	SWITCH WITH PROTECTION 12(10)		0	0	
002	3.406.0004	1.12	18	1	CABLE TERMINAL PG.11		0	0	
003	4.008.0354	5.3	5	1	ELECT.BOX PART'96 WITH SWITCHFRAME	4.008.0897	2.72	8	ELECTRICAL BOX PT'96 X TS ESP.00
004	3.002.0111	1.12	18	2	SCREW TC-TORX M4X10 ZNT		0	0	
005	3.404.0017	8.41	3	1	25 MF 450V CAPACITOR 39x94		0	0	
006	4.008.0613	1.67	12	1	ELECTRIC-BOX SEAL		0	0	
007	4.008.0583	11.46	2	1	MOTOR FAN COVER '96 WITHOUT GRILL		0	0	
008	3.099.0049	11.25	2	1	LOCKING RING D.23 FAN FB80		0	0	
009	4.008.0092	1.64	13	1	FAN FB80 WITH HOLE D.16,5 (PARTNER)		0	0	
010	5.002.0089	85.64	1	1	MOTOR FRAME '96 D.110 H90 230/50 2P		0	0	
011	3.001.0020	11.25	2	1	RADIAL FOR POSTERIOR FLANGE 17X40X12 6203		0	0	
012	5.005.0034	28.02	1	1	MOTOR CRANKSHAFT 110'97 D.55 H.90 ESP. 01		0	0	
013	3.002.0115	1.12	18	3	SCREW TC M5X35 SWAGEFORM ZNT		0	0	
014	4.005.0099	18.87	2	1	FRONT FLANGE FOR MOTOR 110'96	5.009.0166	21.42	1	FRONT MOTOR FLANGE 110X5 5H.80'96
015	3.201.0008	5.58	4	1	OIL SEALING RING D. 17X35X7		0	0	
016	3.001.0030	23.14	1	1	RADIAL		0	0	
017	4.005.0173	9.73	3	1	PLATE 6'30 CYLINDRIC HOLE		0	0	
018	3.001.0003	2.25	9	1	DISK AS 4565		0	0	
019	3.001.0004	4.43	6	1	NEEDLE ROLLER CAGE MOD. AXK4565	3.001.0025	2.55	8	NEEDLE-ROLLER CAGE
020	4.007.0001	0.02	1000	1	THRUST SHOE D.65 (C10Pb) FINISHED		0	0	
021	5.009.0090	11.01	2	3	ASSEMBL.BOLT/PISTON D.14 RETIFIED		0	0	
022	3.200.0014	1.12	18	1	O-RING GASKET 85X2,5 NITRILIC		0	0	
023	4.007.0025	1.14	18	3	PISTON RECALL SPRING D.14		0	0	
049	3.200.0013	1.12	18	3	O-RING 11,1X1,78		0	0	
050	3.201.0004	6.7	3	3	OIL SEALING RING DIAM.14X22X5/7		0	0	
051	3.002.0094	1.12	18	2	SCREW TCEI M6X30 ZNT		0	0	
053	4.006.0109	5.74	4	1	TAPERED 1/8 CAP		0	0	
054	3.200.0018	1.12	18	1	OR-RING GASKET 9.92X2.62 SHORE90		0	0	
055	3.200.0019	1.12	18	3	O-RING 12.4X1.78 SH.90		0	0	
056	5.009.0101	5.15	4	3	CAP VALVE SUCTION DELIVERY-ORMOUNTED		0	0	
057	5.009.0005	7.23	3	3	DELIVERY SUCTION VALVE LAVOR 1		0	0	
058	4.008.0031	1.14	18	1	INLET WATER FILTER H2O D.16 CONICAL		0	0	
062	4.008.0348	1.14	18	3	OIL SEAL SPACER		0	0	

8.026.0012

R50010366-2

MOTOP.PARTNER 110h90 230/50 TS6'30 (VERSIONE'01)

